


FPRN Datasheet

Site Name:	Dothan	 <p>FDOT Florida Permanent Reference Network</p>
Site Code:	ALDO	
RTCM Code:	0354	
Receiver Type:	LEICA GRX1200GGPRO	
Serial Number:	356329	
Firmware:	-	
Antenna Type:	LEIAX1202GG NONE	
Serial Number:	07210005	
Satellite Systems:	G/R/-/-/-	

NAVD 88 Orthometric Height

Leveled	Geoid 18*	FPRN18**
108.242 M	108.257 M	- M

NAD 83 (2011) epoch 2010.000 Current Broadcast Datum of FPRN

After 1/6/2020

Geodetic Position*	
Latitude	31°14'22.15193" N
E Longitude	274°33'35.31392" E
W Longitude	85°26'24.68608" W
Ellipsoid Height	81.114 M
Cartesian Coordinates*	
X = 433936.233 M	
Y = -5441061.324 M	
Z = 3288666.657 M	

State Plane Coordinates*	
Zone: AL E	
N: 82048.198 M	
E: 237451.286 M	
UTM Coordinates*	
Zone: 16	
N: 3457192.349 M	
E: 648543.963 M	

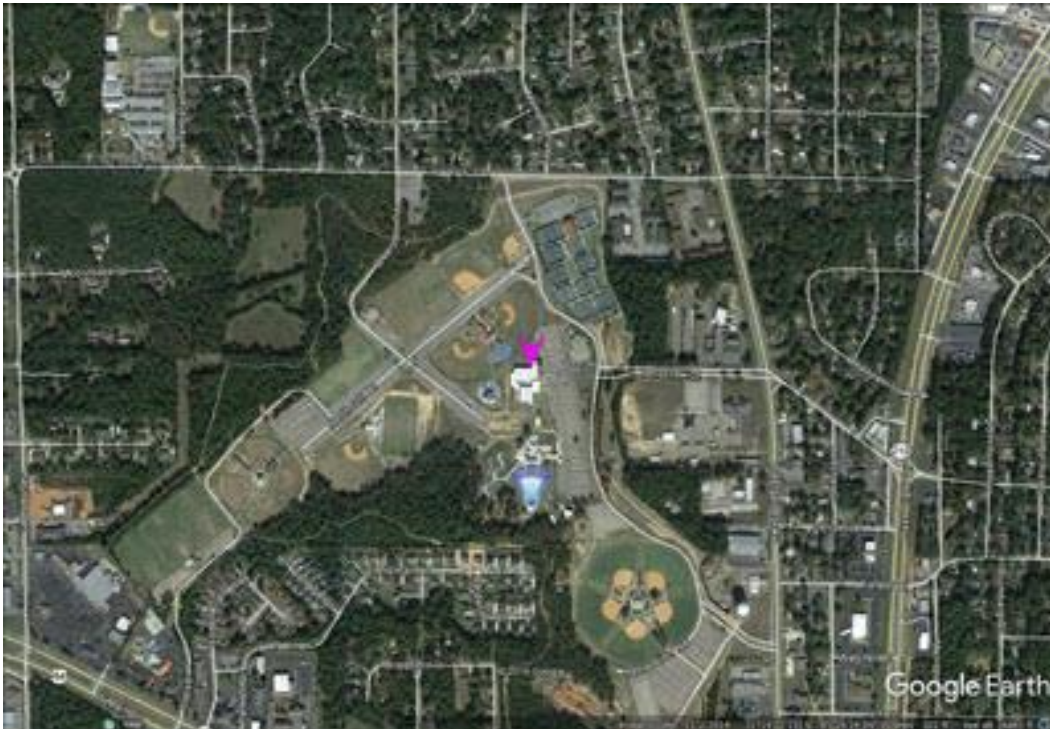
ITRF 2014 epoch 2019.837

After 1/6/2020

Geodetic Position*	
Latitude	31° 14' 22.17404" N
E Longitude	274° 33' 35.28650" E
W Longitude	85° 26' 24.71350" W
Ellipsoid Height	79.693 M
Cartesian Coordinates*	
X = 433935.385 M	
Y = -5441059.819 M	
Z = 3288666.502 M	

State Plane Coordinates*	
Zone: -	
N: - M	
E: - M	
UTM Coordinates*	
Zone: -	
N: - M	
E: - M	
UTM Coordinates*	
Zone: 16	
N: 3457193.019 M	
E: 648543.228 M	

FPRN Datasheet
For
Dothan (ALDO)



* Positions and Coordinates were calculated using OPUS Projects software published by National Geodetic Survey (NGS).
** FPRN18 Orthometric Heights were calculated using Infinity software published by Leica Geosystems.



NAD 83 (2011) epoch 2010.000

After 9/6/2019

Geodetic Position*	
Latitude	31° 14' 22.15188" N
W Longitude	85° 26' 24.68607" W
Ellipsoid Height	81.113 M
Cartesian Coordinates*	
X = 433936.233 M	
Y = -5441061.325 M	
Z = 3288666.655 M	

State Plane Coordinates*									
Zone: AL E									
N: 82048.197 M									
E: 237451.286 M		UTM Coordinates*		Zone: 16		N: 3457192.347 M		E: 648543.963 M	
UTM Coordinates*									
Zone: 16									
N: 3457192.347 M									
E: 648543.963 M									

ITRF 2014 epoch 2019.078

After 9/6/2019

Geodetic Position*	
Latitude	31° 14' 22.17356" N
E Longitude	274° 33' 35.2912" E
W Longitude	85° 26' 24.70880" W
Ellipsoid Height	79.694 M
Cartesian Coordinates*	
X = 433935.510 M	
Y = -5441059.818 M	
Z = 3288666.490 M	

State Plane Coordinates*																									
Zone: -																									
N: - M																									
E: - M		UTM Coordinates*		Zone: -		N: - M		E: - M		UTM Coordinates*		Zone: -		N: - M		E: - M		UTM Coordinates*		Zone: 16		N: 3457193.006 M		E: 648543.352 M	
UTM Coordinates*																									
Zone: -																									
N: - M																									
E: - M		UTM Coordinates*		Zone: -		N: - M		E: - M		UTM Coordinates*		Zone: 16		N: 3457193.006 M		E: 648543.352 M									
UTM Coordinates*																									
Zone: -																									
N: - M																									
E: - M		UTM Coordinates*		Zone: 16		N: 3457193.006 M		E: 648543.352 M																	
UTM Coordinates*																									
Zone: 16																									
N: 3457193.006 M																									
E: 648543.352 M																									

NAD 83 (2011) epoch 2010.000

After 8/16/2018

Geodetic Position*	
Latitude	31° 14' 22.15190" N
W. Longitude	85° 26' 24.68596" W
Ellipsoid Height	81.108 M
Cartesian Coordinates*	
X = 433936.236 M	
Y = -5441061.320 M	
Z = 3288666.653 M	

State Plane Coordinates*									
Zone: AL E									
N: 82048.197 M									
E: 237451.289 M		UTM Coordinates*		Zone: 16		N: 3457192.348 M		E: 648543.966 M	
UTM Coordinates*									
Zone: 16									
N: 3457192.348 M									
E: 648543.966 M									



NAD 83 (2011) epoch 2010.000

After 8/25/2015

Geodetic Position*	
Latitude	31° 14' 22.15190" N
W. Longitude	85° 26' 24.68596" W
Ellipsoid Height	81.108 M
Cartesian Coordinates*	
X = 433936.236 M	
Y = -5441061.320 M	
Z = 3288666.653 M	

State Plane Coordinates*	
Zone: AL E	
N: 82048.197 M	
E: 237451.289 M	
UTM Coordinates*	
Zone: 16	
N: 3457192.348 M	
E: 648543.966 M	

NAD 83 (2011) epoch 2010.000

After 8/2/2014

Geodetic Position*	
Latitude	31° 14' 22.15190" N
W. Longitude	85° 26' 24.68596" W
Ellipsoid Height	81.108 M
Cartesian Coordinates*	
X = 433936.236 M	
Y = -5441061.320 M	
Z = 3288666.653 M	

State Plane Coordinates*	
Zone: AL E	
N: 82048.197 M	
E: 237451.289 M	
UTM Coordinates*	
Zone: 16	
N: 3457192.348 M	
E: 648543.966 M	

NAD 83 (CORS96)

Prior to 8/2/2014

Geodetic Position*	
Latitude	31° 14' 22.15239" N
W. Longitude	85° 26' 24.68680" W
Ellipsoid Height	81.113 M
Cartesian Coordinates*	
X = 433936.213 M	
Y = -5441061.318 M	
Z = 3288666.669 M	

State Plane Coordinates*	
Zone: AL E	
N: 82048.212 M	
E: 237451.267 M	
UTM Coordinates*	
Zone: 16	
N: 3457192.363 M	
E: 648543.944 M	