


FPRN Datasheet

Site Name:	East Brewton	
Site Code:	ALEB	
RTCM Code:	0355	
Receiver Type:	LEICA GRX1200GGPRO	
Serial Number:	356215	
Firmware:	-	
Antenna Type:	LEIAX1202GG NONE	
Serial Number:	08080073	
Satellite Systems:	G/R/-/-/-	

NAVD 88 Orthometric Height

Leveled	Geoid 18*	FPRN18**
- M	42.557 M	- M

NAD 83 (2011) epoch 2010.000 Current Broadcast Datum of FPRN

After 1/6/2020

Geodetic Position*	
Latitude	31°05'29.22358" N
E Longitude	272°56'39.69394" E
W Longitude	87°03'20.30606" W
Ellipsoid Height	14.902 M
Cartesian Coordinates*	
X = 280807.188 M	
Y = -5459558.160 M	
Z = 3274588.027 M	

State Plane Coordinates*	
Zone: AL W	
N: 121076.951 M	
E: 642395.039 M	
UTM Coordinates*	
Zone: 16	
N: 3439738.403 M	
E: 494693.289 M	

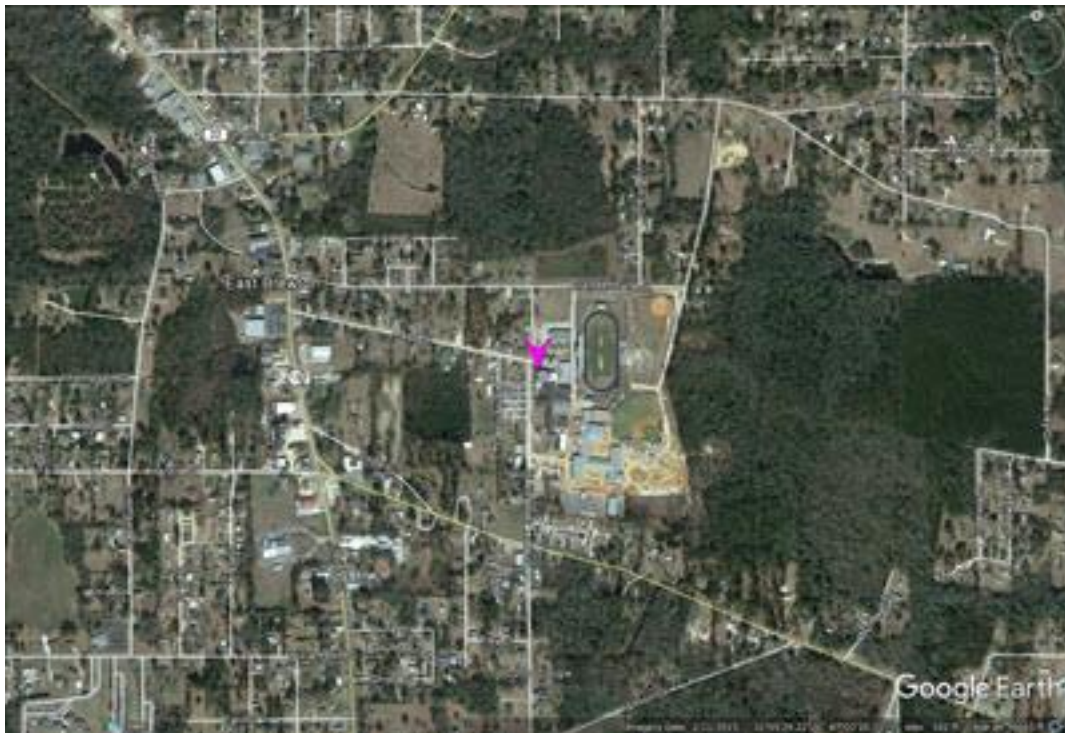
ITRF 2014 epoch 2019.839

After 1/6/2020

Geodetic Position*	
Latitude	31° 05' 29.24500" N
E Longitude	272° 56' 39.66498" E
W Longitude	87° 03' 20.33502" W
Ellipsoid Height	13.494 M
Cartesian Coordinates*	
X = 280806.342 M	
Y = -5459556.655 M	
Z = 3274587.865 M	

State Plane Coordinates*	
Zone: -	
N: - M	
E: - M	
UTM Coordinates*	
Zone: -	
N: - M	
E: - M	
UTM Coordinates*	
Zone: 16	
N: 3439739.063 M	
E: 494692.522 M	

FPRN Datasheet
For
East Brewton (ALEB)



* Positions and Coordinates were calculated using OPUS Projects software published by National Geodetic Survey (NGS).
** FPRN18 Orthometric Heights were calculated using Infinity software published by Leica Geosystems.



NAD 83 (2011) epoch 2010.000

After 9/6/2019

Geodetic Position*	
Latitude	31° 05' 29.22359" N
W Longitude	87° 03' 20.30611" W
Ellipsoid Height	14.903 M
Cartesian Coordinates*	
X = 280807.187 M	
Y = -5459558.161 M	
Z = 3274588.028 M	

State Plane Coordinates*	
Zone: AL W	
N: 121076.951 M	
E: 642395.038 M	
UTM Coordinates*	
Zone: 16	
N: 3439738.404 M	
E: 494693.288 M	

ITRF 2014 epoch 2019.078

After 9/6/2019

Geodetic Position*	
Latitude	31° 05' 29.24468" N
E Longitude	272° 56' 39.66957" E
W Longitude	87° 03' 20.33043" W
Ellipsoid Height	13.501 M
Cartesian Coordinates*	
X = 280806.464 M	
Y = -5459556.660 M	
Z = 3274587.860 M	

State Plane Coordinates*	
Zone: -	
N: - M	
E: - M	
Zone: -	
N: - M	
E: - M	
Zone: -	
N: - M	
E: - M	
UTM Coordinates*	
Zone: 16	
N: 3439739.053 M	
E: 494692.644 M	

NAD 83 (2011) epoch 2010.000

After 8/16/2018

Geodetic Position*	
Latitude	31° 05' 29.22361" N
W. Longitude	87° 03' 20.30601" W
Ellipsoid Height	14.897 M
Cartesian Coordinates*	
X = 280807.189 M	
Y = -5459558.155 M	
Z = 3274588.025 M	

State Plane Coordinates*	
Zone: AL W	
N: 121076.952 M	
E: 642395.040 M	
UTM Coordinates*	
Zone: 16	
N: 3439738.404 M	
E: 494693.291 M	



NAD 83 (2011) epoch 2010.000

After 8/25/2015

Geodetic Position*	
Latitude	31° 05' 29.22361" N
W. Longitude	87° 03' 20.30601" W
Ellipsoid Height	14.897 M
Cartesian Coordinates*	
X = 280807.189 M	
Y = -5459558.155 M	
Z = 3274588.025 M	

State Plane Coordinates*									
Zone: AL W									
N: 121076.952 M									
E: 642395.040 M		UTM Coordinates*		Zone: 16		N: 3439738.404 M		E: 494693.291 M	
UTM Coordinates*									
Zone: 16									
N: 3439738.404 M									
E: 494693.291 M									

NAD 83 (2011) epoch 2010.000

After 8/2/2014

Geodetic Position*	
Latitude	31° 05' 29.22361" N
W. Longitude	87° 03' 20.30601" W
Ellipsoid Height	14.897 M
Cartesian Coordinates*	
X = 280807.189 M	
Y = -5459558.155 M	
Z = 3274588.025 M	

State Plane Coordinates*									
Zone: AL W									
N: 121076.952 M									
E: 642395.040 M		UTM Coordinates*		Zone: 16		N: 3439738.404 M		E: 494693.291 M	
UTM Coordinates*									
Zone: 16									
N: 3439738.404 M									
E: 494693.291 M									

NAD 83 (CORS96)

Prior to 8/2/2014

Geodetic Position*	
Latitude	31° 05' 29.22419" N
W. Longitude	87° 03' 20.30695" W
Ellipsoid Height	14.885 M
Cartesian Coordinates*	
X = 280807.163 M	
Y = -5459558.137 M	
Z = 3274588.034 M	

State Plane Coordinates*									
Zone: AL W									
N: 121076.970 M									
E: 642395.015 M		UTM Coordinates*		Zone: 16		N: 3439738.422 M		E: 494693.266 M	
UTM Coordinates*									
Zone: 16									
N: 3439738.422 M									
E: 494693.266 M									