


FPRN Datasheet

Site Name:	St. Johns	
Site Code:	BART	
RTCM Code:	0251	
Receiver Type:	LEICA GR30	
Serial Number:	0	
Firmware:	-	
Antenna Type:	LEIAR20 LEIM	
Serial Number:	-	
Satellite Systems:	G/R/E/C/-	

NAVD 88 Orthometric Height

Leveled	Geoid 18*	FPRN18**
- M	27.326 M	27.321 M

NAD 83 (2011) epoch 2010.000 Current Broadcast Datum of FPRN

After 1/6/2020

Geodetic Position*	
Latitude	30°02'45.92682" N
E Longitude	278°23'24.45983" E
W Longitude	81°36'35.54017" W
Ellipsoid Height	-0.876 M
Cartesian Coordinates*	
X = 806269.015 M	
Y = -5466560.595 M	
Z = 3174797.047 M	

State Plane Coordinates*	
Zone: FL E	
N: 633133.321 M	
E: 141185.806 M	
UTM Coordinates*	
Zone: 17	
N: 3324049.280 M	
E: 441205.874 M	

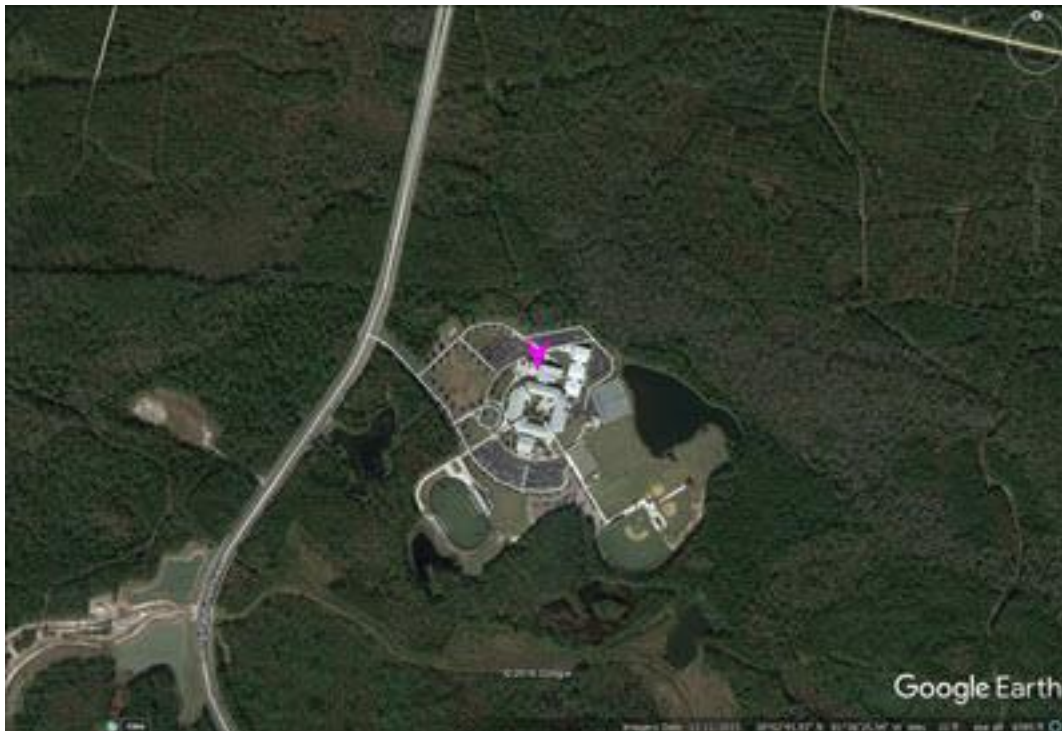
ITRF 2014 epoch 2019.838

After 1/6/2020

Geodetic Position*	
Latitude	30° 02' 45.94940" N
E Longitude	278° 23' 24.43714" E
W Longitude	81° 36' 35.56286" W
Ellipsoid Height	-2.371 M
Cartesian Coordinates*	
X = 806268.174 M	
Y = -5466559.059 M	
Z = 3174796.900 M	

State Plane Coordinates*	
Zone: -	
N: - M	
E: - M	
UTM Coordinates*	
Zone: -	
N: - M	
E: - M	
UTM Coordinates*	
Zone: 17	
N: 3324049.978 M	
E: 441205.270 M	

Image not available



* Positions and Coordinates were calculated using OPUS Projects software published by National Geodetic Survey (NGS).
** FPRN18 Orthometric Heights were calculated using Infinity software published by Leica Geosystems.



NAD 83 (2011) epoch 2010.000

After 9/6/2019

Geodetic Position*	
Latitude	30° 02' 45.92647" N
W Longitude	81° 36' 35.53925" W
Ellipsoid Height	-0.887 M
Cartesian Coordinates*	
X = 806269.039 M	
Y = -5466560.587 M	
Z = 3174797.032 M	

State Plane Coordinates*											
Zone: FL E											
N: 633133.310 M											
E: 141185.831 M				UTM Coordinates*		Zone: 17		N: 3324049.269 M		E: 441205.898 M	
UTM Coordinates*											
Zone: 17											
N: 3324049.269 M											
E: 441205.898 M											

ITRF 2014 epoch 2019.078

After 9/6/2019

Geodetic Position*	
Latitude	30° 02' 45.94914" N
E Longitude	278° 23' 24.4378" E
W Longitude	81° 36' 35.56220" W
Ellipsoid Height	-2.378 M
Cartesian Coordinates*	
X = 806268.191 M	
Y = -5466559.054 M	
Z = 3174796.890 M	

State Plane Coordinates*																											
Zone: -																											
N: - M																											
E: - M				Zone: -		N: - M		E: - M				Zone: -		N: - M		E: - M				UTM Coordinates*		Zone: 17		N: 3324049.970 M		E: 441205.287 M	
Zone: -																											
N: - M																											
E: - M				Zone: -		N: - M		E: - M				UTM Coordinates*		Zone: 17		N: 3324049.970 M		E: 441205.287 M									
Zone: -																											
N: - M																											
E: - M				UTM Coordinates*		Zone: 17		N: 3324049.970 M		E: 441205.287 M																	
UTM Coordinates*																											
Zone: 17																											
N: 3324049.970 M																											
E: 441205.287 M																											

NAD 83 (2011) epoch 2010.000

After 8/16/2018

Geodetic Position*	
Latitude	30° 02' 45.92662" N
W. Longitude	81° 36' 35.53962" W
Ellipsoid Height	-0.912 M
Cartesian Coordinates*	
X = 806269.026 M	
Y = -5466560.565 M	
Z = 3174797.024 M	

State Plane Coordinates*											
Zone: FL E											
N: 633133.315 M											
E: 141185.821 M				UTM Coordinates*		Zone: 17		N: 3324049.273 M		E: 441205.888 M	
UTM Coordinates*											
Zone: 17											
N: 3324049.273 M											
E: 441205.888 M											



NAD 83 (2011) epoch 2010.000

After 8/25/2015

Geodetic Position*	
Latitude	30° 02' 45.92662" N
W. Longitude	81° 36' 35.53962" W
Ellipsoid Height	-0.912 M
Cartesian Coordinates*	
X = 806269.026 M	
Y = -5466560.565 M	
Z = 3174797.024 M	

State Plane Coordinates*	
Zone: FL E	
N: 633133.315 M	
E: 141185.821 M	
UTM Coordinates*	
Zone: 17	
N: 3324049.273 M	
E: 441205.888 M	

NAD 83 (2011) epoch 2010.000

After 8/2/2014

Geodetic Position*	
Latitude	30° 02' 45.92656" N
W. Longitude	81° 36' 35.53959" W
Ellipsoid Height	-0.912 M
Cartesian Coordinates*	
X = 806269.027 M	
Y = -5466560.566 M	
Z = 3174797.022 M	

State Plane Coordinates*	
Zone: FL E	
N: 633133.313 M	
E: 141185.822 M	
UTM Coordinates*	
Zone: 17	
N: 3324049.272 M	
E: 441205.889 M	

NAD 83 (CORS96)

Prior to 8/2/2014

Geodetic Position*	
Latitude	30° 02' 45.92590" N
W. Longitude	81° 36' 35.54049" W
Ellipsoid Height	-0.820 M
Cartesian Coordinates*	
X = 806269.016 M	
Y = -5466560.658 M	
Z = 3174797.051 M	

State Plane Coordinates*	
Zone: FL E	
N: 633133.292 M	
E: 141185.798 M	
UTM Coordinates*	
Zone: 17	
N: 3324049.251 M	
E: 441205.865 M	