


FPRN Datasheet

Site Name:	Palm Valley	
Site Code:	CRNR	
RTCM Code:	0252	
Receiver Type:	LEICA GR30	
Serial Number:	0	
Firmware:	-	
Antenna Type:	LEIAR20 LEIM	
Serial Number:	-	
Satellite Systems:	G/R/E/C/-	

NAVD 88 Orthometric Height

Leveled	Geoid 18*	FPRN18**
- M	14.920 M	14.942 M

NAD 83 (2011) epoch 2010.000 Current Broadcast Datum of FPRN

After 1/6/2020

Geodetic Position*	
Latitude	30°10'02.92132" N
E Longitude	278°37'50.93751" E
W Longitude	81°22'09.06249" W
Ellipsoid Height	-13.567 M
Cartesian Coordinates*	
X = 828211.196 M	
Y = -5456441.126 M	
Z = 3186431.607 M	

State Plane Coordinates*	
Zone: FL E	
N: 646489.675 M	
E: 164440.741 M	
UTM Coordinates*	
Zone: 17	
N: 3337401.076 M	
E: 464452.873 M	

ITRF 2014 epoch 2019.838

After 1/6/2020

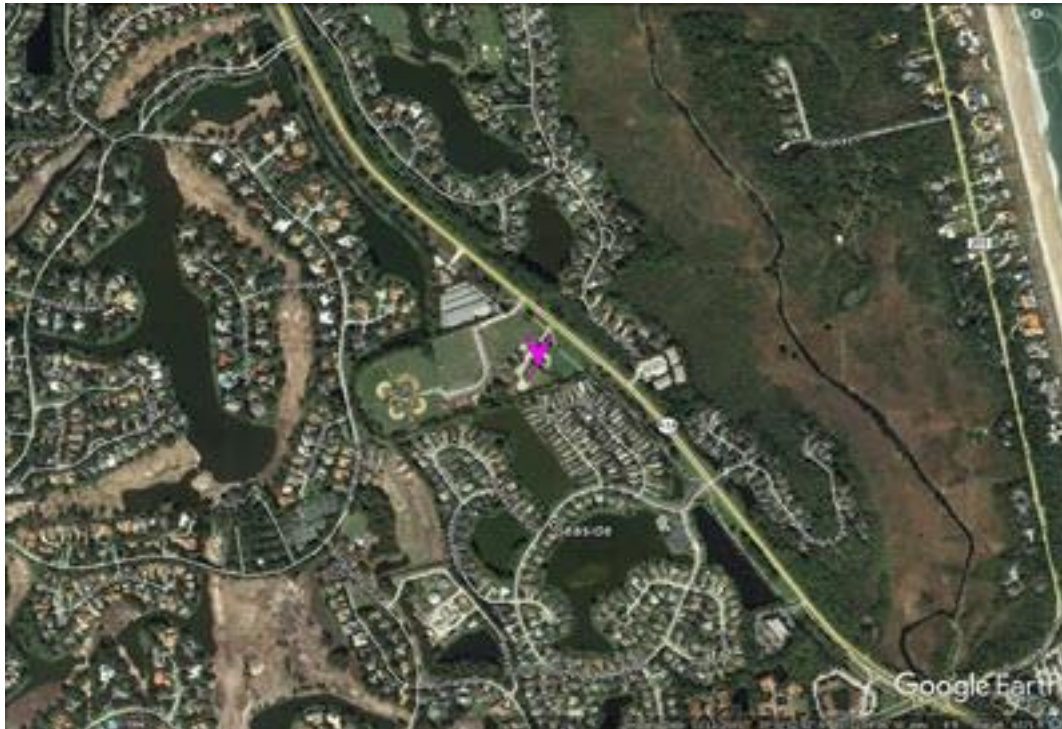
Geodetic Position*	
Latitude	30° 10' 02.94409" N
E Longitude	278° 37' 50.91502" E
W Longitude	81° 22' 09.08498" W
Ellipsoid Height	-15.063 M
Cartesian Coordinates*	
X = 828210.354 M	
Y = -5456439.590 M	
Z = 3186431.462 M	

State Plane Coordinates*	
Zone: -	
N: - M	
E: - M	
UTM Coordinates*	
Zone: -	
N: - M	
E: - M	
UTM Coordinates*	
Zone: 17	
N: 3337401.779 M	
E: 464452.274 M	

FPRN Datasheet
For
Palm Valley (CRNR)



Image not available



* Positions and Coordinates were calculated using OPUS Projects software published by National Geodetic Survey (NGS).
** FPRN18 Orthometric Heights were calculated using Infinity software published by Leica Geosystems.



NAD 83 (2011) epoch 2010.000

After 9/6/2019

Geodetic Position*	
Latitude	30° 10' 02.92096" N
W Longitude	81° 22' 09.06194" W
Ellipsoid Height	-13.584 M
Cartesian Coordinates*	
X = 828211.209 M	
Y = -5456441.115 M	
Z = 3186431.589 M	

State Plane Coordinates*	
Zone: FL E	
N: 646489.663 M	
E: 164440.755 M	
UTM Coordinates*	
Zone: 17	
N: 3337401.065 M	
E: 464452.888 M	

ITRF 2014 epoch 2019.078

After 9/6/2019

Geodetic Position*	
Latitude	30° 10' 02.94384" N
E Longitude	278° 37' 50.91533" E
W Longitude	81° 22' 09.08467" W
Ellipsoid Height	-15.074 M
Cartesian Coordinates*	
X = 828210.361 M	
Y = -5456439.583 M	
Z = 3186431.449 M	

State Plane Coordinates*	
Zone: -	
N: - M	
E: - M	
Zone: -	
N: - M	
E: - M	
Zone: -	
N: - M	
E: - M	
UTM Coordinates*	
Zone: 17	
N: 3337401.771 M	
E: 464452.282 M	

NAD 83 (2011) epoch 2010.000

After 8/16/2018

Geodetic Position*	
Latitude	30° 10' 02.92090" N
W. Longitude	81° 22' 09.06245" W
Ellipsoid Height	-13.575 M
Cartesian Coordinates*	
X = 828211.197 M	
Y = -5456441.126 M	
Z = 3186431.592 M	

State Plane Coordinates*	
Zone: FL E	
N: 646489.662 M	
E: 164440.742 M	
UTM Coordinates*	
Zone: 17	
N: 3337401.063 M	
E: 464452.874 M	



NAD 83 (2011) epoch 2010.000

After 8/25/2015

Geodetic Position*	
Latitude	30° 10' 02.92090" N
W. Longitude	81° 22' 09.06245" W
Ellipsoid Height	-13.575 M
Cartesian Coordinates*	
X = 828211.197 M	
Y = -5456441.126 M	
Z = 3186431.592 M	

State Plane Coordinates*	
Zone: FL E	
N: 646489.662 M	
E: 164440.742 M	
UTM Coordinates*	
Zone: 17	
N: 3337401.063 M	
E: 464452.874 M	

NAD 83 (2011) epoch 2010.000

After 8/2/2014

Geodetic Position*	
Latitude	30° 10' 02.92095" N
W. Longitude	81° 22' 09.06246" W
Ellipsoid Height	-13.601 M
Cartesian Coordinates*	
X = 828211.193 M	
Y = -5456441.103 M	
Z = 3186431.580 M	

State Plane Coordinates*	
Zone: FL E	
N: 646489.663 M	
E: 164440.741 M	
UTM Coordinates*	
Zone: 17	
N: 3337401.065 M	
E: 464452.874 M	

NAD 83 (CORS96)

Prior to 8/2/2014

Geodetic Position*	
Latitude	30° 10' 02.92050" N
W. Longitude	81° 22' 09.06298" W
Ellipsoid Height	-13.431 M
Cartesian Coordinates*	
X = 828211.203 M	
Y = -5456441.257 M	
Z = 3186431.654 M	

State Plane Coordinates*	
Zone: FL E	
N: 646489.649 M	
E: 164440.727 M	
UTM Coordinates*	
Zone: 17	
N: 3337401.051 M	
E: 464452.860 M	