


FPRN Datasheet

Site Name:	Destin	 <p>Florida Permanent Reference Network</p>
Site Code:	DSTN	
RTCM Code:	0304	
Receiver Type:	LEICA GR30	
Serial Number:	1702039	
Firmware:	4.30	
Antenna Type:	LEIAR20 NONE	
Serial Number:	16226008	
Satellite Systems:	G/R/E/-/-	

NAVD 88 Orthometric Height

Leveled	Geoid 18*	FPRN18**
- M	9.470 M	9.464 M

NAD 83 (2011) epoch 2010.000 Current Broadcast Datum of FPRN

After 1/6/2020

Geodetic Position*	
Latitude	30°23'19.03310" N
E Longitude	273°32'29.04732" E
W Longitude	86°27'30.95268" W
Ellipsoid Height	-17.866 M
Cartesian Coordinates*	
X = 340139.880 M	
Y = -5496059.249 M	
Z = 3207600.415 M	

State Plane Coordinates*	
Zone: FL N	
N: 155542.551 M	
E: 411780.389 M	
UTM Coordinates*	
Zone: 16	
N: 3361973.219 M	
E: 552012.701 M	

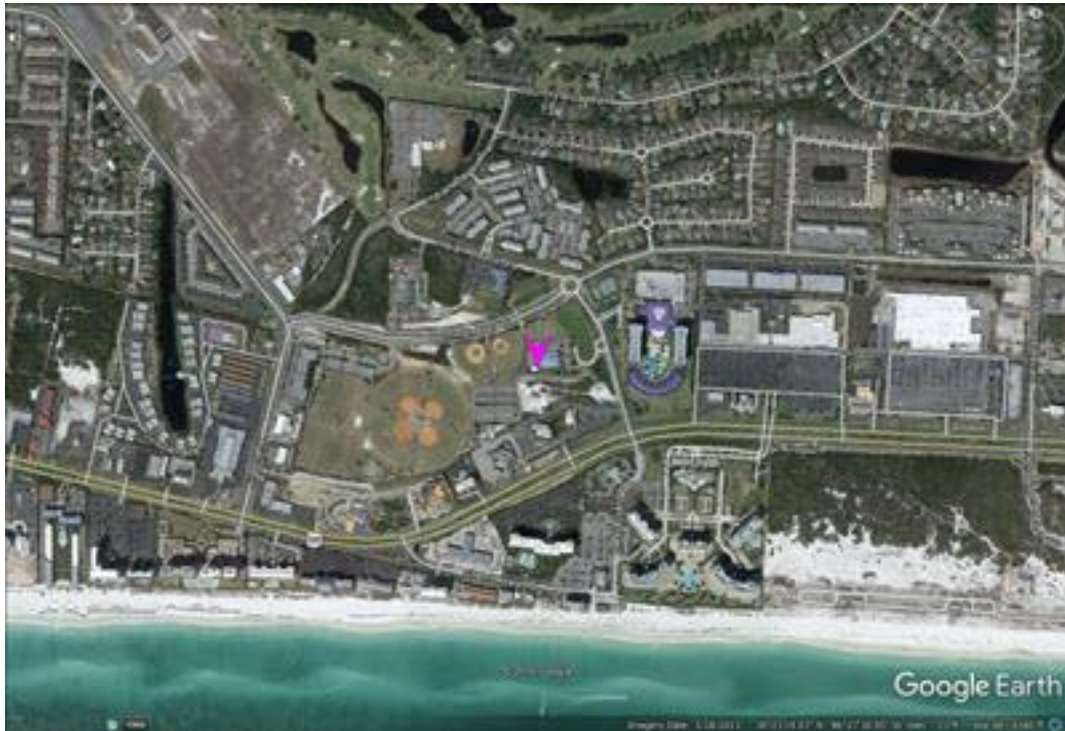
ITRF 2014 epoch 2019.837

After 1/6/2020

Geodetic Position*	
Latitude	30° 23' 19.05395" N
E Longitude	273° 32' 29.01931" E
W Longitude	86° 27' 30.98069" W
Ellipsoid Height	-19.292 M
Cartesian Coordinates*	
X = 340139.038 M	
Y = -5496057.743 M	
Z = 3207600.248 M	

State Plane Coordinates*	
Zone: -	
N: - M	
E: - M	
Zone: -	
N: - M	
E: - M	
Zone: -	
N: - M	
E: - M	
UTM Coordinates*	
Zone: 16	
N: 3361973.858 M	
E: 552011.951 M	

FPRN Datasheet
For
Destin (DSTN)



* Positions and Coordinates were calculated using OPUS Projects software published by National Geodetic Survey (NGS).
** FPRN18 Orthometric Heights were calculated using Infinity software published by Leica Geosystems.



NAD 83 (2011) epoch 2010.000

After 9/6/2019

Geodetic Position*	
Latitude	30° 23' 19.03308" N
W Longitude	86° 27' 30.95225" W
Ellipsoid Height	-17.968 M
Cartesian Coordinates*	
X = 340139.886 M	
Y = -5496059.161 M	
Z = 3207600.363 M	

State Plane Coordinates*	
Zone: FL N	
N: 155542.551 M	
E: 411780.401 M	
UTM Coordinates*	
Zone: 16	
N: 3361973.219 M	
E: 552012.713 M	

ITRF 2014 epoch 2019.078

After 9/6/2019

Geodetic Position*	
Latitude	30° 23' 19.05405" N
E Longitude	273° 32' 29.01958" E
W Longitude	86° 27' 30.98042" W
Ellipsoid Height	-19.390 M
Cartesian Coordinates*	
X = 340139.040 M	
Y = -5496057.657 M	
Z = 3207600.200 M	

State Plane Coordinates*	
Zone: -	
N: - M	
E: - M	
UTM Coordinates*	
Zone: -	
N: - M	
E: - M	
UTM Coordinates*	
Zone: -	
N: - M	
E: - M	
UTM Coordinates*	
Zone: 16	
N: 3361973.861 M	
E: 552011.958 M	

NAD 83 (2011) epoch 2010.000

After 8/16/2018

Geodetic Position*	
Latitude	30° 23' 19.03303" N
W. Longitude	86° 27' 30.95269" W
Ellipsoid Height	-17.975 M
Cartesian Coordinates*	
X = 340139.874 M	
Y = -5496059.156 M	
Z = 3207600.358 M	

State Plane Coordinates*	
Zone: FL N	
N: 155542.549 M	
E: 411780.389 M	
UTM Coordinates*	
Zone: 16	
N: 3361973.217 M	
E: 552012.701 M	



NAD 83 (2011) epoch 2010.000

After 8/25/2015

Geodetic Position*	
Latitude	30° 23' 19.03303" N
W. Longitude	86° 27' 30.95269" W
Ellipsoid Height	-17.975 M
Cartesian Coordinates*	
X = 340139.874 M	
Y = -5496059.156 M	
Z = 3207600.358 M	

State Plane Coordinates*	
Zone: FL N	
N: 155542.549 M	
E: 411780.389 M	
UTM Coordinates*	
Zone: 16	
N: 3361973.217 M	
E: 552012.701 M	

NAD 83 (2011) epoch 2010.000

After 8/2/2014

Geodetic Position*	
Latitude	30° 23' 19.03286" N
W. Longitude	86° 27' 30.95251" W
Ellipsoid Height	-17.975 M
Cartesian Coordinates*	
X = 340139.879 M	
Y = -5496059.159 M	
Z = 3207600.354 M	

State Plane Coordinates*	
Zone: FL N	
N: 155542.544 M	
E: 411780.394 M	
UTM Coordinates*	
Zone: 16	
N: 3361973.212 M	
E: 552012.706 M	

NAD 83 (CORS96)

Prior to 8/2/2014

Geodetic Position*	
Latitude	30° 23' 19.03322" N
W. Longitude	86° 27' 30.95315" W
Ellipsoid Height	-18.007 M
Cartesian Coordinates*	
X = 340139.860 M	
Y = -5496059.126 M	
Z = 3207600.347 M	

State Plane Coordinates*	
Zone: FL N	
N: 155542.556 M	
E: 411780.377 M	
UTM Coordinates*	
Zone: 16	
N: 3361973.223 M	
E: 552012.689 M	