


FPRN Datasheet

Site Name:	Jennings		
Site Code:	FL75		
RTCM Code:	0216		
Receiver Type:	LEICA GR30		
Serial Number:	1701942		
Firmware:	4.30		
Antenna Type:	LEIAR20	NONE	
Serial Number:	16226020		
Satellite Systems:	G/R/E/-/-		

NAVD 88 Orthometric Height

Leveled	Geoid 18*	FPRN18**
- M	52.583 M	52.581 M

NAD 83 (2011) epoch 2010.000 Current Broadcast Datum of FPRN

After 1/6/2020

Geodetic Position*	
Latitude	30°36'45.09179" N
E Longitude	276°51'11.94795" E
W Longitude	83°08'48.05205" W
Ellipsoid Height	24.499 M
Cartesian Coordinates*	
X = 655589.304 M	
Y = -5454757.164 M	
Z = 3229009.437 M	

State Plane Coordinates*	
Zone: FL N	
N: 179517.469 M	
E: 729761.530 M	
UTM Coordinates*	
Zone: 17	
N: 3388624.964 M	
E: 294217.516 M	

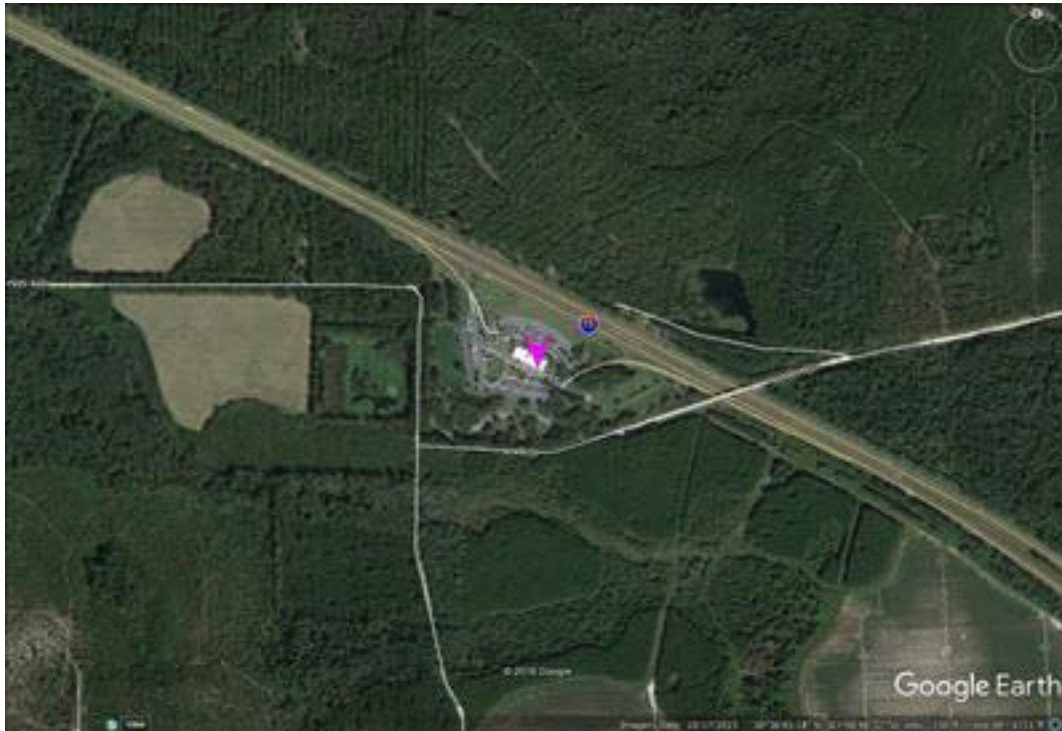
ITRF 2014 epoch 2019.839

After 1/6/2020

Geodetic Position*	
Latitude	30° 36' 45.11425" N
E Longitude	276° 51' 11.92336" E
W Longitude	83° 08' 48.07664" W
Ellipsoid Height	23.034 M
Cartesian Coordinates*	
X = 655588.461 M	
Y = -5454755.641 M	
Z = 3229009.287 M	

State Plane Coordinates*	
Zone: -	
N: - M	
E: - M	
UTM Coordinates*	
Zone: -	
N: - M	
E: - M	
UTM Coordinates*	
Zone: 17	
N: 3388625.669 M	
E: 294216.874 M	

FPRN Datasheet
For
Jennings (FL75)



* Positions and Coordinates were calculated using OPUS Projects software published by National Geodetic Survey (NGS).
** FPRN18 Orthometric Heights were calculated using Infinity software published by Leica Geosystems.



NAD 83 (2011) epoch 2010.000

After 9/6/2019

Geodetic Position*	
Latitude	30° 36' 45.09165" N
W Longitude	83° 08' 48.05135" W
Ellipsoid Height	24.492 M
Cartesian Coordinates*	
X = 655589.322 M	
Y = -5454757.158 M	
Z = 3229009.430 M	

State Plane Coordinates*											
Zone: FL N											
N: 179517.466 M											
E: 729761.548 M				UTM Coordinates*		Zone: 17		N: 3388624.960 M		E: 294217.534 M	
UTM Coordinates*											
Zone: 17											
N: 3388624.960 M											
E: 294217.534 M											

ITRF 2014 epoch 2019.078

After 9/6/2019

Geodetic Position*	
Latitude	30° 36' 45.11419" N
E Longitude	276° 51' 11.92379" E
W Longitude	83° 08' 48.07621" W
Ellipsoid Height	23.033 M
Cartesian Coordinates*	
X = 655588.473 M	
Y = -5454755.640 M	
Z = 3229009.285 M	

State Plane Coordinates*																											
Zone: -																											
N: - M																											
E: - M				Zone: -		N: - M		E: - M				Zone: -		N: - M		E: - M				UTM Coordinates*		Zone: 17		N: 3388625.667 M		E: 294216.885 M	
Zone: -																											
N: - M																											
E: - M				Zone: -		N: - M		E: - M				UTM Coordinates*		Zone: 17		N: 3388625.667 M		E: 294216.885 M									
Zone: -																											
N: - M																											
E: - M				UTM Coordinates*		Zone: 17		N: 3388625.667 M		E: 294216.885 M																	
UTM Coordinates*																											
Zone: 17																											
N: 3388625.667 M																											
E: 294216.885 M																											

NAD 83 (2011) epoch 2010.000

After 8/16/2018

Geodetic Position*	
Latitude	30° 36' 45.09161" N
W. Longitude	83° 08' 48.05181" W
Ellipsoid Height	24.502 M
Cartesian Coordinates*	
X = 655589.311 M	
Y = -5454757.169 M	
Z = 3229009.434 M	

State Plane Coordinates*											
Zone: FL N											
N: 179517.464 M											
E: 729761.536 M				UTM Coordinates*		Zone: 17		N: 3388624.959 M		E: 294217.522 M	
UTM Coordinates*											
Zone: 17											
N: 3388624.959 M											
E: 294217.522 M											



NAD 83 (2011) epoch 2010.000

After 8/25/2015

Geodetic Position*	
Latitude	30° 36' 45.09161" N
W. Longitude	83° 08' 48.05181" W
Ellipsoid Height	24.502 M
Cartesian Coordinates*	
X = 655589.311 M	
Y = -5454757.169 M	
Z = 3229009.434 M	

State Plane Coordinates*	
Zone: FL N	
N: 179517.464 M	
E: 729761.536 M	
UTM Coordinates*	
Zone: 17	
N: 3388624.959 M	
E: 294217.522 M	

NAD 83 (2011) epoch 2010.000

After 8/2/2014

Geodetic Position*	
Latitude	30° 36' 45.09176" N
W. Longitude	83° 08' 48.05186" W
Ellipsoid Height	24.498 M
Cartesian Coordinates*	
X = 655589.309 M	
Y = -5454757.163 M	
Z = 3229009.436 M	

State Plane Coordinates*	
Zone: FL N	
N: 179517.469 M	
E: 729761.535 M	
UTM Coordinates*	
Zone: 17	
N: 3388624.964 M	
E: 294217.521 M	

NAD 83 (CORS96)

Prior to 8/2/2014

Geodetic Position*	
Latitude	- N
W. Longitude	- W
Ellipsoid Height	0.000 M
Cartesian Coordinates*	
X = 0.000 M	
Y = 0.000 M	
Z = 0.000 M	

State Plane Coordinates*	
Zone: FL N	
N: 0.000 M	
E: 0.000 M	
UTM Coordinates*	
Zone: 17	
N: 0.000 M	
E: 0.000 M	