


FPRN Datasheet

Site Name:	Branford	
Site Code:	FLBF	
RTCM Code:	0217	
Receiver Type:	LEICA GR30	
Serial Number:	1702018	
Firmware:	4.30	
Antenna Type:	LEIAR20 NONE	
Serial Number:	16074007	
Satellite Systems:	G/R/E/-/-	

NAVD 88 Orthometric Height

Leveled	Geoid 18*	FPRN18**
- M	14.594 M	14.597 M

NAD 83 (2011) epoch 2010.000 Current Broadcast Datum of FPRN

After 1/6/2020

Geodetic Position*	
Latitude	29°57'42.67581" N
E Longitude	277°05'25.48670" E
W Longitude	82°54'34.51330" W
Ellipsoid Height	-13.265 M
Cartesian Coordinates*	
X = 682642.157 M	
Y = -5488065.359 M	
Z = 3166704.400 M	

State Plane Coordinates*	
Zone: FL N	
N: 107689.493 M	
E: 753499.772 M	
UTM Coordinates*	
Zone: 17	
N: 3316092.415 M	
E: 315737.131 M	

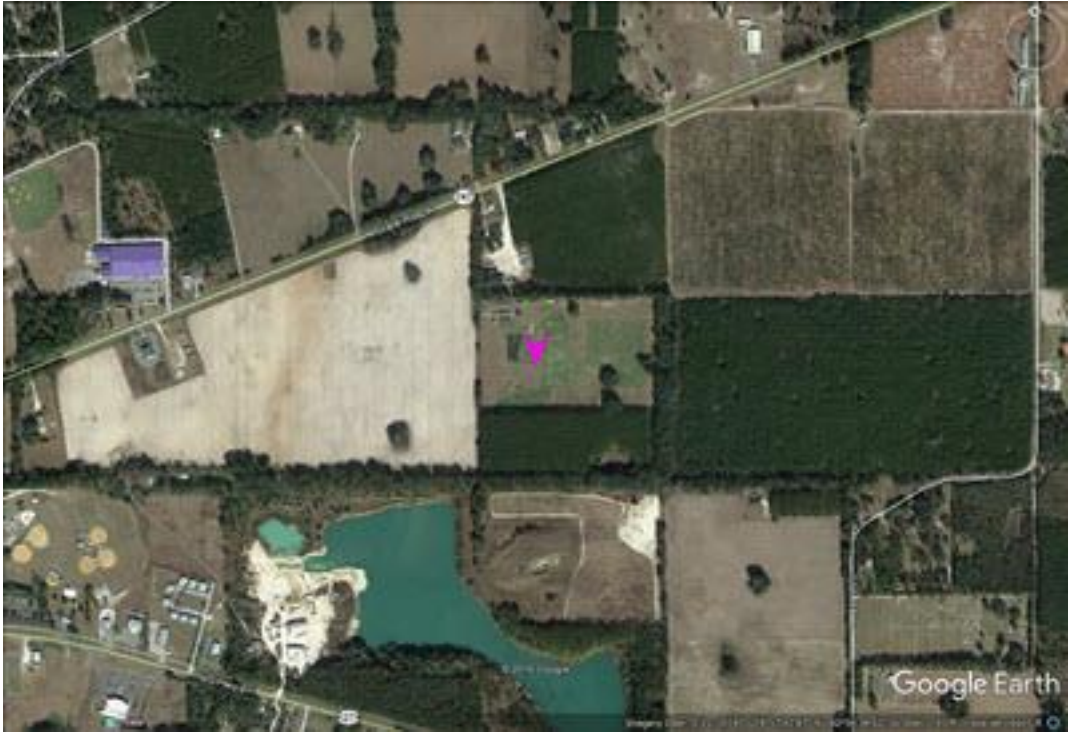
ITRF 2014 epoch 2019.837

After 1/6/2020

Geodetic Position*	
Latitude	29° 57' 42.69781" N
E Longitude	277° 05' 25.46273" E
W Longitude	82° 54' 34.53727" W
Ellipsoid Height	-14.746 M
Cartesian Coordinates*	
X = 682641.319 M	
Y = -5488063.829 M	
Z = 3166704.247 M	

State Plane Coordinates*	
Zone: -	
N: - M	
E: - M	
UTM Coordinates*	
Zone: -	
N: - M	
E: - M	
UTM Coordinates*	
Zone: 17	
N: 3316093.103 M	
E: 315736.500 M	

FPRN Datasheet
For
Branford (FLBF)



* Positions and Coordinates were calculated using OPUS Projects software published by National Geodetic Survey (NGS).
** FPRN18 Orthometric Heights were calculated using Infinity software published by Leica Geosystems.



NAD 83 (2011) epoch 2010.000

After 9/6/2019

Geodetic Position*	
Latitude	29° 57' 42.67561" N
W Longitude	82° 54' 34.51255" W
Ellipsoid Height	-13.286 M
Cartesian Coordinates*	
X = 682642.175 M	
Y = -5488065.341 M	
Z = 3166704.384 M	

State Plane Coordinates*	
Zone: FL N	
N: 107689.487 M	
E: 753499.792 M	
UTM Coordinates*	
Zone: 17	
N: 3316092.409 M	
E: 315737.151 M	

ITRF 2014 epoch 2019.078

After 9/6/2019

Geodetic Position*	
Latitude	29° 57' 42.69771" N
E Longitude	277° 5' 25.46318" E
W Longitude	82° 54' 34.53682" W
Ellipsoid Height	-14.764 M
Cartesian Coordinates*	
X = 682641.329 M	
Y = -5488063.813 M	
Z = 3166704.235 M	

State Plane Coordinates*	
Zone: -	
N: - M	
E: - M	
Zone: -	
N: - M	
E: - M	
Zone: -	
N: - M	
E: - M	
UTM Coordinates*	
Zone: 17	
N: 3316093.100 M	
E: 315736.512 M	

NAD 83 (2011) epoch 2010.000

After 8/16/2018

Geodetic Position*	
Latitude	29° 57' 42.67564" N
W. Longitude	82° 54' 34.51320" W
Ellipsoid Height	-13.271 M
Cartesian Coordinates*	
X = 682642.159 M	
Y = -5488065.356 M	
Z = 3166704.392 M	

State Plane Coordinates*	
Zone: FL N	
N: 107689.487 M	
E: 753499.775 M	
UTM Coordinates*	
Zone: 17	
N: 3316092.410 M	
E: 315737.134 M	



NAD 83 (2011) epoch 2010.000

After 8/25/2015

Geodetic Position*	
Latitude	29° 57' 42.67564" N
W. Longitude	82° 54' 34.51320" W
Ellipsoid Height	-13.271 M
Cartesian Coordinates*	
X = 682642.159 M	
Y = -5488065.356 M	
Z = 3166704.392 M	

State Plane Coordinates*	
Zone: FL N	
N: 107689.487 M	
E: 753499.775 M	
UTM Coordinates*	
Zone: 17	
N: 3316092.410 M	
E: 315737.134 M	

NAD 83 (2011) epoch 2010.000

After 8/2/2014

Geodetic Position*	
Latitude	- N
W. Longitude	- W
Ellipsoid Height	0.000 M
Cartesian Coordinates*	
X = 0.000 M	
Y = 0.000 M	
Z = 0.000 M	

State Plane Coordinates*	
Zone: FL N	
N: 0.000 M	
E: 0.000 M	
UTM Coordinates*	
Zone: 17	
N: 0.000 M	
E: 0.000 M	

NAD 83 (CORS96)

Prior to 8/2/2014

Geodetic Position*	
Latitude	- N
W. Longitude	- W
Ellipsoid Height	0.000 M
Cartesian Coordinates*	
X = 0.000 M	
Y = 0.000 M	
Z = 0.000 M	

State Plane Coordinates*	
Zone: FL N	
N: 0.000 M	
E: 0.000 M	
UTM Coordinates*	
Zone: 17	
N: 0.000 M	
E: 0.000 M	