


## FPRN Datasheet

Site Name:	Palm Coast	 <p><b>FDOT</b> Florida Permanent Reference Network</p>
Site Code:	FLBN	
RTCM Code:	0551	
Receiver Type:	LEICA GR30	
Serial Number:	1702961	
Firmware:	3.03	
Antenna Type:	LEIAS10 NONE	
Serial Number:	-	
Satellite Systems:	G/R/-/-/-	

### NAVD 88 Orthometric Height

<b>Leveled</b>	<b>Geoid 18*</b>	<b>FPRN18**</b>
- M	19.871 M	19.870 M

### NAD 83 (2011) epoch 2010.000 Current Broadcast Datum of FPRN

After 1/6/2020

Geodetic Position*	
Latitude	29°35'38.91185" N
E Longitude	278°42'46.45338" E
W Longitude	81°17'13.54662" W
Ellipsoid Height	-8.852 M
Cartesian Coordinates*	
X = 840824.761 M	
Y = -5486550.119 M	
Z = 3131328.450 M	

State Plane Coordinates*	
Zone: FL E	
N: 582915.708 M	
E: 172188.701 M	
UTM Coordinates*	
Zone: 17	
N: 3273848.801 M	
E: 472198.190 M	

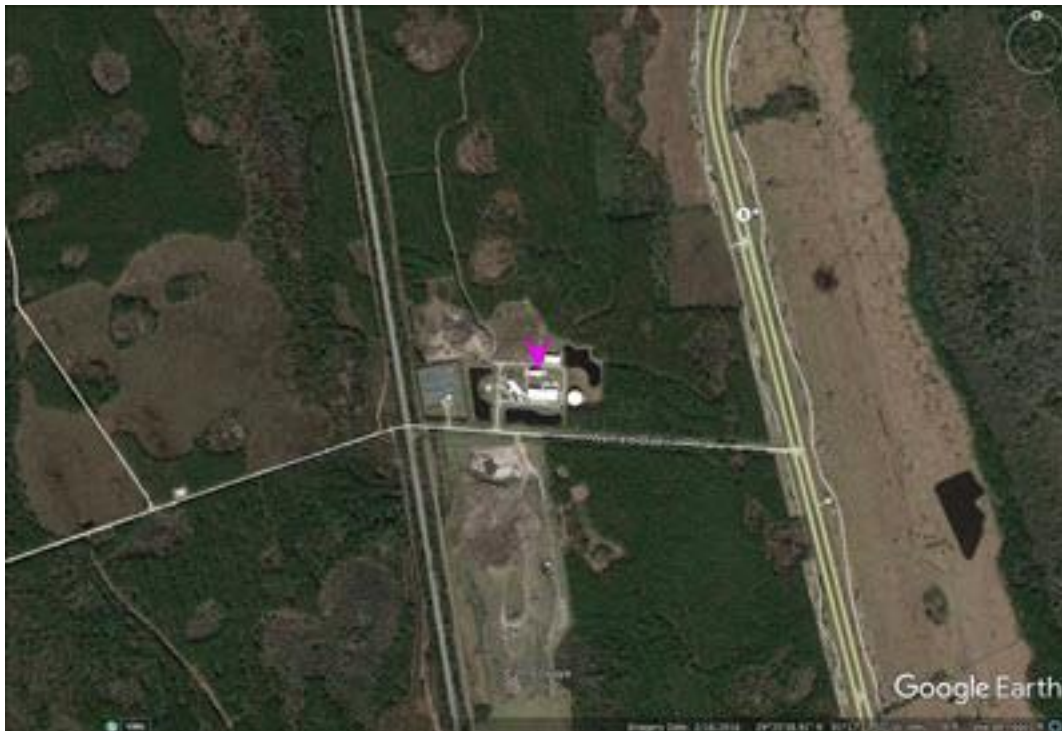
### ITRF 2014 epoch 2019.839

After 1/6/2020

Geodetic Position*	
Latitude	29° 35' 38.93420" N
E Longitude	278° 42' 46.43134" E
W Longitude	81° 17' 13.56866" W
Ellipsoid Height	-10.411 M
Cartesian Coordinates*	
X = 840823.918 M	
Y = -5486548.533 M	
Z = 3131328.278 M	

State Plane Coordinates*	
Zone: -	
N: - M	
E: - M	
UTM Coordinates*	
Zone: -	
N: - M	
E: - M	
UTM Coordinates*	
Zone: 17	
N: 3273849.490 M	
E: 472197.599 M	

FPRN Datasheet  
For  
Palm Coast (FLBN)



\* Positions and Coordinates were calculated using OPUS Projects software published by National Geodetic Survey (NGS).  
\*\* FPRN18 Orthometric Heights were calculated using Infinity software published by Leica Geosystems.



### NAD 83 (2011) epoch 2010.000

After 9/6/2019

Geodetic Position*	
Latitude	29° 35' 38.91183" N
W Longitude	81° 17' 13.54662" W
Ellipsoid Height	-8.852 M
Cartesian Coordinates*	
X = 840824.040 M	
Y = -5486548.570 M	
Z = 3131328.279 M	

State Plane Coordinates*	
Zone: FL E	
N: 582915.707 M	
E: 172188.701 M	
UTM Coordinates*	
Zone: 17	
N: 3273848.800 M	
E: 472198.190 M	

### ITRF 2014 epoch 2019.078

After 9/6/2019

Geodetic Position*	
Latitude	29° 35' 38.93334" N
E Longitude	278° 42' 46.43561" E
W Longitude	81° 17' 13.56439" W
Ellipsoid Height	-10.362 M
Cartesian Coordinates*	
X = 840824.400 M	
Y = -5486548.570 M	
Z = 3131328.279 M	

State Plane Coordinates*	
Zone: -	
N: - M	
E: - M	
Zone: -	
N: - M	
E: - M	
Zone: -	
N: - M	
E: - M	
UTM Coordinates*	
Zone: 17	
N: 3273849.464 M	
E: 472197.714 M	

### NAD 83 (2011) epoch 2010.000

After 8/16/2018

Geodetic Position*	
Latitude	29° 35' 38.91184" N
W. Longitude	81° 17' 13.54649" W
Ellipsoid Height	-8.889 M
Cartesian Coordinates*	
X = 840824.760 M	
Y = -5486550.087 M	
Z = 3131328.431 M	

State Plane Coordinates*	
Zone: FL E	
N: 582915.708 M	
E: 172188.705 M	
UTM Coordinates*	
Zone: 17	
N: 3273848.801 M	
E: 472198.194 M	



### NAD 83 (2011) epoch 2010.000

After 8/25/2015

Geodetic Position*	
Latitude	29° 35' 38.91184" N
W. Longitude	81° 17' 13.54649" W
Ellipsoid Height	-8.889 M
Cartesian Coordinates*	
X = 840824.760 M	
Y = -5486550.087 M	
Z = 3131328.431 M	

State Plane Coordinates*	
Zone: FL E	
N: 582915.708 M	
E: 172188.705 M	
UTM Coordinates*	
Zone: 17	
N: 3273848.801 M	
E: 472198.194 M	

### NAD 83 (2011) epoch 2010.000

After 8/2/2014

Geodetic Position*	
Latitude	29° 35' 38.91184" N
W. Longitude	81° 17' 13.54649" W
Ellipsoid Height	-8.889 M
Cartesian Coordinates*	
X = 840824.760 M	
Y = -5486550.087 M	
Z = 3131328.431 M	

State Plane Coordinates*	
Zone: FL E	
N: 582915.708 M	
E: 172188.705 M	
UTM Coordinates*	
Zone: 17	
N: 3273848.801 M	
E: 472198.194 M	

### NAD 83 (CORS96)

Prior to 8/2/2014

Geodetic Position*	
Latitude	29° 35' 38.91227" N
W. Longitude	81° 17' 13.54715" W
Ellipsoid Height	-8.844 M
Cartesian Coordinates*	
X = 840824.747 M	
Y = -5486550.122 M	
Z = 3131328.465 M	

State Plane Coordinates*	
Zone: FL E	
N: 582915.721 M	
E: 172188.687 M	
UTM Coordinates*	
Zone: 17	
N: 3273848.814 M	
E: 472198.176 M	