


## FPRN Datasheet

Site Name:	District 7	 <p><b>FDOT</b> Florida Permanent Reference Network</p>
Site Code:	FLD7	
RTCM Code:	0705	
Receiver Type:	LEICA GR30	
Serial Number:	1702541	
Firmware:	4.30	
Antenna Type:	LEIAR20 NONE	
Serial Number:	16268004	
Satellite Systems:	G/R/E/-/-	

### NAVD 88 Orthometric Height

<b>Leveled</b>	<b>Geoid 18*</b>	<b>FPRN18**</b>
- M	12.320 M	12.352 M

### NAD 83 (2011) epoch 2010.000 Current Broadcast Datum of FPRN

After 1/6/2020

Geodetic Position*	
Latitude	27°58'10.34703" N
E Longitude	277°38'09.40768" E
W Longitude	82°21'50.59232" W
Ellipsoid Height	-12.821 M
Cartesian Coordinates*	
X = 749073.496 M	
Y = -5587303.039 M	
Z = 2973518.489 M	

State Plane Coordinates*	
Zone: FL W	
N: 402887.093 M	
E: 164182.932 M	
UTM Coordinates*	
Zone: 17	
N: 3094577.355 M	
E: 365837.983 M	

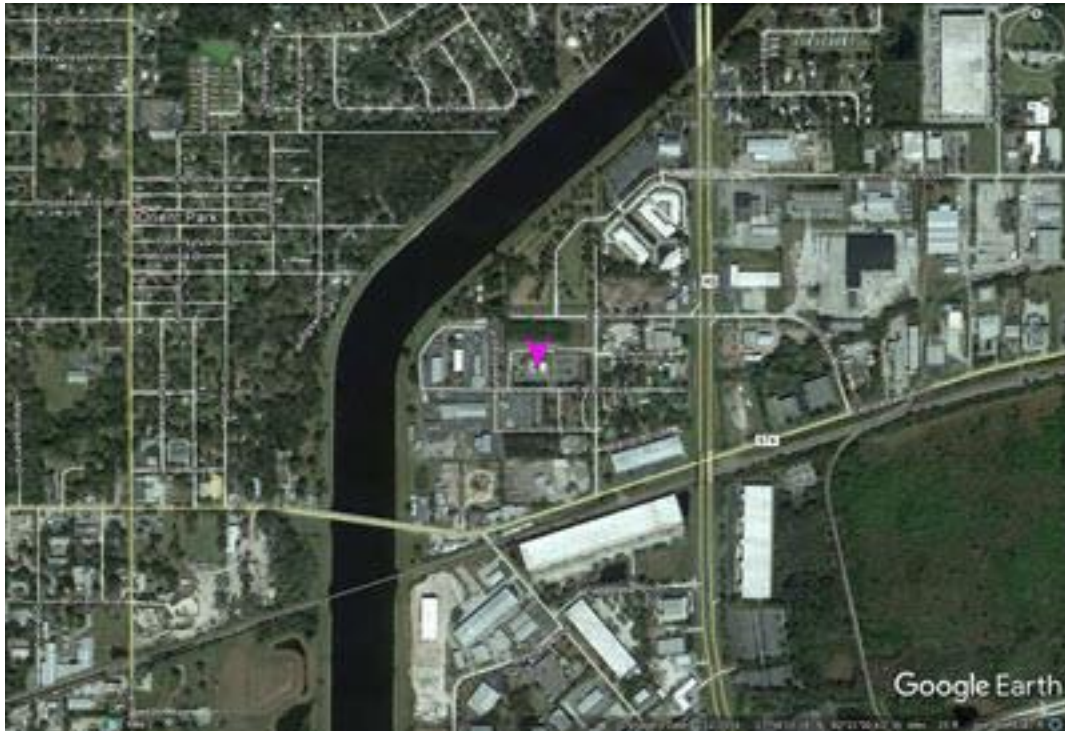
### ITRF 2014 epoch 2019.837

After 1/6/2020

Geodetic Position*	
Latitude	27° 58' 10.36740" N
E Longitude	277° 38' 09.38517" E
W Longitude	82° 21' 50.61483" W
Ellipsoid Height	-14.366 M
Cartesian Coordinates*	
X = 749072.666 M	
Y = -5587301.477 M	
Z = 2973518.318 M	

State Plane Coordinates*	
Zone: -	
N: - M	
E: - M	
UTM Coordinates*	
Zone: -	
N: - M	
E: - M	
UTM Coordinates*	
Zone: 17	
N: 3094577.989 M	
E: 365837.375 M	

*Image not available*



\* Positions and Coordinates were calculated using OPUS Projects software published by National Geodetic Survey (NGS).  
\*\* FPRN18 Orthometric Heights were calculated using Infinity software published by Leica Geosystems.



### NAD 83 (2011) epoch 2010.000

After 9/6/2019

Geodetic Position*	
Latitude	27° 58' 10.34674" N
W Longitude	82° 21' 50.59168" W
Ellipsoid Height	-12.830 M
Cartesian Coordinates*	
X = 749073.513 M	
Y = -5587303.033 M	
Z = 2973518.477 M	

State Plane Coordinates*	
Zone: FL W	
N: 402887.084 M	
E: 164182.950 M	
UTM Coordinates*	
Zone: 17	
N: 3094577.346 M	
E: 365838.001 M	

### ITRF 2014 epoch 2019.078

After 9/6/2019

Geodetic Position*	
Latitude	27° 58' 10.36734" N
E Longitude	277° 38' 9.38563" E
W Longitude	82° 21' 50.61437" W
Ellipsoid Height	-14.365 M
Cartesian Coordinates*	
X = 749072.679 M	
Y = -5587301.477 M	
Z = 2973518.317 M	

State Plane Coordinates*	
Zone: -	
N: - M	
E: - M	
Zone: -	
N: - M	
E: - M	
Zone: -	
N: - M	
E: - M	
UTM Coordinates*	
Zone: 17	
N: 3094577.987 M	
E: 365837.388 M	

### NAD 83 (2011) epoch 2010.000

After 8/16/2018

Geodetic Position*	
Latitude	27° 58' 10.34680" N
W. Longitude	82° 21' 50.59215" W
Ellipsoid Height	-12.837 M
Cartesian Coordinates*	
X = 749073.499 M	
Y = -5587303.028 M	
Z = 2973518.475 M	

State Plane Coordinates*	
Zone: FL W	
N: 402887.086 M	
E: 164182.937 M	
UTM Coordinates*	
Zone: 17	
N: 3094577.348 M	
E: 365837.988 M	



### NAD 83 (2011) epoch 2010.000

After 8/25/2015

Geodetic Position*	
Latitude	27° 58' 10.34680" N
W. Longitude	82° 21' 50.59215" W
Ellipsoid Height	-12.837 M
Cartesian Coordinates*	
X = 749073.499 M	
Y = -5587303.028 M	
Z = 2973518.475 M	

State Plane Coordinates*	
Zone: FL W	
N: 402887.086 M	
E: 164182.937 M	
UTM Coordinates*	
Zone: 17	
N: 3094577.348 M	
E: 365837.988 M	

### NAD 83 (2011) epoch 2010.000

After 8/2/2014

Geodetic Position*	
Latitude	27° 58' 10.34667" N
W. Longitude	82° 21' 50.59218" W
Ellipsoid Height	-12.837 M
Cartesian Coordinates*	
X = 749073.499 M	
Y = -5587303.030 M	
Z = 2973518.472 M	

State Plane Coordinates*	
Zone: FL W	
N: 402887.082 M	
E: 164182.936 M	
UTM Coordinates*	
Zone: 17	
N: 3094577.344 M	
E: 365837.987 M	

### NAD 83 (CORS96)

Prior 8/2/2014

Geodetic Position*	
Latitude	- N
W. Longitude	- W
Ellipsoid Height	0.000 M
Cartesian Coordinates*	
X = 0.000 M	
Y = 0.000 M	
Z = 0.000 M	

State Plane Coordinates*	
Zone: FL W	
N: 0.000 M	
E: 0.000 M	
UTM Coordinates*	
Zone: 17	
N: 0.000 M	
E: 0.000 M	