


FPRN Datasheet

Site Name:	Eustis	 <p>FDOT Florida Permanent Reference Network</p>
Site Code:	FLEU	
RTCM Code:	0514	
Receiver Type:	LEICA GR30	
Serial Number:	1701764	
Firmware:	4.30	
Antenna Type:	LEIAR20 NONE	
Serial Number:	16157013	
Satellite Systems:	G/R/E/-/-	

NAVD 88 Orthometric Height

Leveled	Geoid 18*	FPRN18**
- M	38.382 M	38.380 M

NAD 83 (2011) epoch 2010.000 Current Broadcast Datum of FPRN

After 1/6/2020

Geodetic Position*	
Latitude	28°50'46.76544" N
E Longitude	278°18'55.20518" E
W Longitude	81°41'04.79482" W
Ellipsoid Height	10.797 M
Cartesian Coordinates*	
X = 808588.535 M	
Y = -5532306.834 M	
Z = 3058998.278 M	

State Plane Coordinates*	
Zone: FL E	
N: 500191.003 M	
E: 133191.605 M	
UTM Coordinates*	
Zone: 17	
N: 3191152.321 M	
E: 433214.400 M	

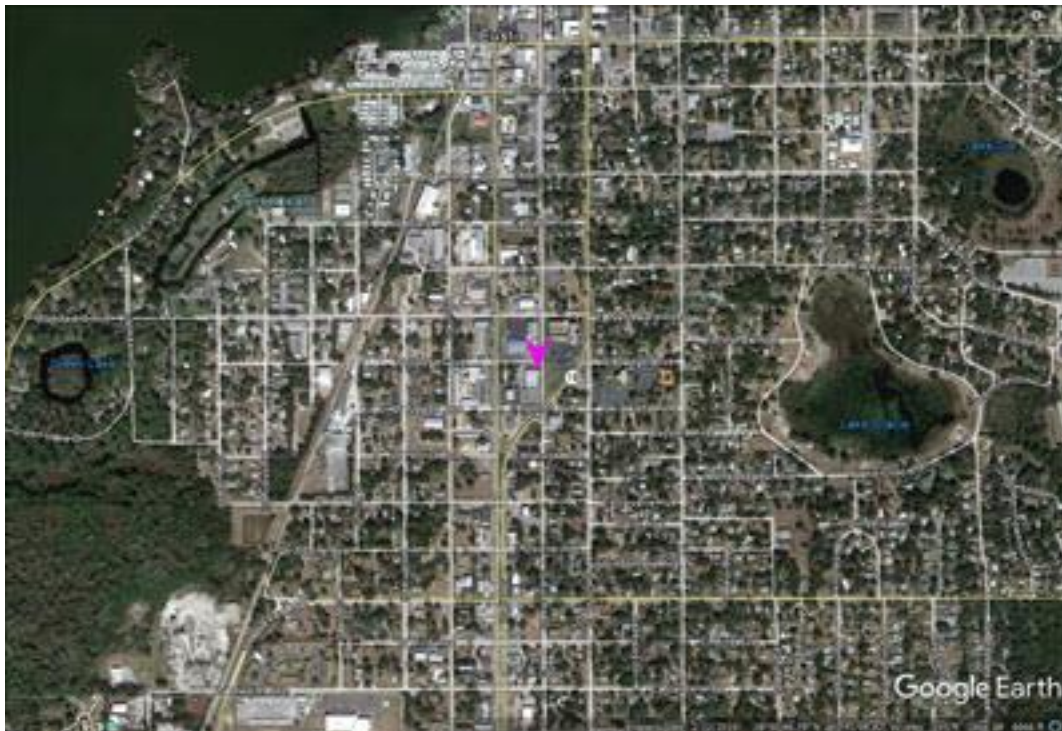
ITRF 2014 epoch 2019.836

After 1/6/2020

Geodetic Position*	
Latitude	28° 50' 46.78691" N
E Longitude	278° 18' 55.18297" E
W Longitude	81° 41' 04.81703" W
Ellipsoid Height	9.275 M
Cartesian Coordinates*	
X = 808587.700 M	
Y = -5532305.286 M	
Z = 3058998.123 M	

State Plane Coordinates*	
Zone: -	
N: - M	
E: - M	
Zone: -	
N: - M	
E: - M	
Zone: -	
N: - M	
E: - M	
UTM Coordinates*	
Zone: 17	
N: 3191152.986 M	
E: 433213.802 M	

FPRN Datasheet
For
Eustis (FLEU)



* Positions and Coordinates were calculated using OPUS Projects software published by National Geodetic Survey (NGS).
** FPRN18 Orthometric Heights were calculated using Infinity software published by Leica Geosystems.



NAD 83 (2011) epoch 2010.000

After 9/6/2019

Geodetic Position*	
Latitude	28° 50' 46.76521" N
W Longitude	81° 41' 04.79440" W
Ellipsoid Height	10.785 M
Cartesian Coordinates*	
X = 808588.545 M	
Y = -5532306.825 M	
Z = 3058998.266 M	

State Plane Coordinates*	
Zone: FL E	
N: 500190.996 M	
E: 133191.616 M	
UTM Coordinates*	
Zone: 17	
N: 3191152.314 M	
E: 433214.411 M	

ITRF 2014 epoch 2019.078

After 9/6/2019

Geodetic Position*	
Latitude	28° 50' 46.78684" N
E Longitude	278° 18' 55.18319" E
W Longitude	81° 41' 04.81681" W
Ellipsoid Height	9.265 M
Cartesian Coordinates*	
X = 808587.705 M	
Y = -5532305.277 M	
Z = 3058998.116 M	

State Plane Coordinates*	
Zone: -	
N: - M	
E: - M	
Zone: -	
N: - M	
E: - M	
Zone: -	
N: - M	
E: - M	
UTM Coordinates*	
Zone: 17	
N: 3191152.983 M	
E: 433213.808 M	

NAD 83 (2011) epoch 2010.000

After 8/16/2018

Geodetic Position*	
Latitude	28° 50' 46.76548" N
W. Longitude	81° 41' 04.79469" W
Ellipsoid Height	10.795 M
Cartesian Coordinates*	
X = 808588.538 M	
Y = -5532306.831 M	
Z = 3058998.278 M	

State Plane Coordinates*	
Zone: FL E	
N: 500191.004 M	
E: 133191.609 M	
UTM Coordinates*	
Zone: 17	
N: 3191152.323 M	
E: 433214.404 M	



NAD 83 (2011) epoch 2010.000

After 8/25/2015

Geodetic Position*	
Latitude	28° 50' 46.76548" N
W. Longitude	81° 41' 04.79469" W
Ellipsoid Height	10.795 M
Cartesian Coordinates*	
X = 808588.538 M	
Y = -5532306.831 M	
Z = 3058998.278 M	

State Plane Coordinates*	
Zone: FL E	
N: 500191.004 M	
E: 133191.609 M	
UTM Coordinates*	
Zone: 17	
N: 3191152.323 M	
E: 433214.404 M	

NAD 83 (2011) epoch 2010.000

After 8/2/2014

Geodetic Position*	
Latitude	- N
W. Longitude	- W
Ellipsoid Height	0.000 M
Cartesian Coordinates*	
X = 0.000 M	
Y = 0.000 M	
Z = 0.000 M	

State Plane Coordinates*	
Zone: FL E	
N: 0.000 M	
E: 0.000 M	
UTM Coordinates*	
Zone: 17	
N: 0.000 M	
E: 0.000 M	

NAD 83 (CORS96)

Prior to 8/2/2014

Geodetic Position*	
Latitude	- N
W. Longitude	- W
Ellipsoid Height	0.000 M
Cartesian Coordinates*	
X = 0.000 M	
Y = 0.000 M	
Z = 0.000 M	

State Plane Coordinates*	
Zone: FL E	
N: 0.000 M	
E: 0.000 M	
UTM Coordinates*	
Zone: 17	
N: 0.000 M	
E: 0.000 M	