


FPRN Datasheet

Site Name:	Gun Range	 <p>FDOT Florida Permanent Reference Network</p>
Site Code:	FLGR	
RTCM Code:	0709	
Receiver Type:	LEICA GR30	
Serial Number:	1701982	
Firmware:	4.30	
Antenna Type:	LEIAR20 NONE	
Serial Number:	16226023	
Satellite Systems:	G/R/E/-/-	

NAVD 88 Orthometric Height

Leveled	Geoid 18*	FPRN18**
- M	42.358 M	42.391 M

NAD 83 (2011) epoch 2010.000 Current Broadcast Datum of FPRN

After 1/6/2020

Geodetic Position*	
Latitude	27°46'50.51922" N
E Longitude	277°50'16.11088" E
W Longitude	82°09'43.88912" W
Ellipsoid Height	17.298 M
Cartesian Coordinates*	
X = 770091.656 M	
Y = -5594348.516 M	
Z = 2955033.863 M	

State Plane Coordinates*	
Zone: FL W	
N: 381918.618 M	
E: 184015.296 M	
UTM Coordinates*	
Zone: 17	
N: 3073451.070 M	
E: 385495.434 M	

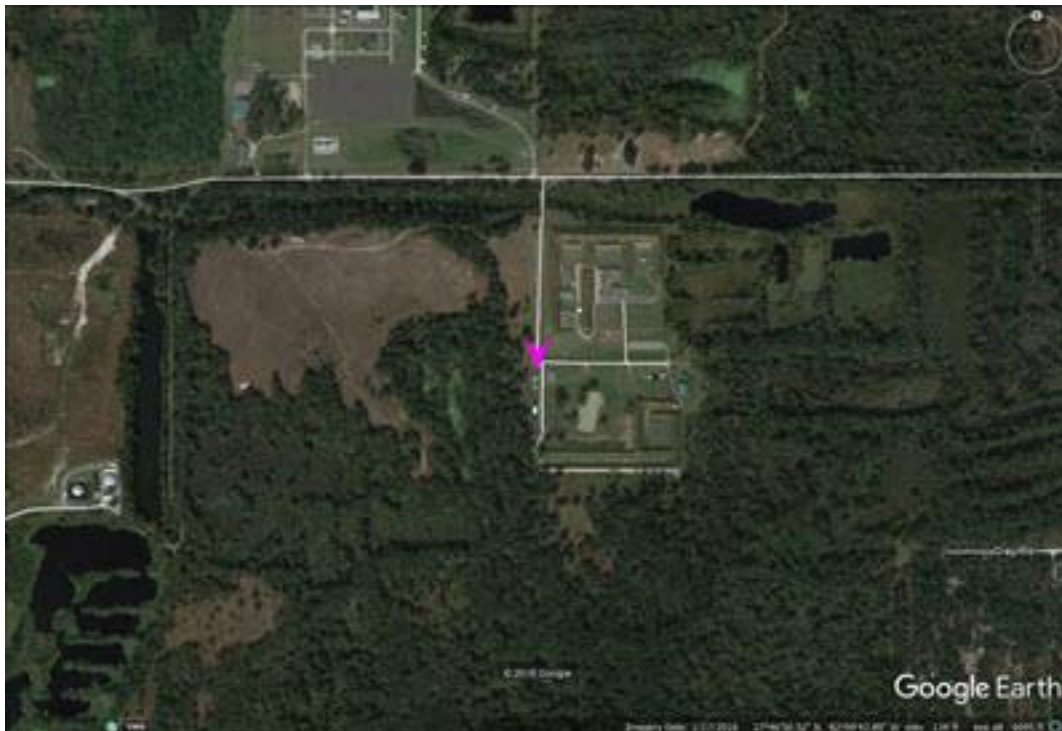
ITRF 2014 epoch 2019.836

After 1/6/2020

Geodetic Position*	
Latitude	27° 46' 50.53951" N
E Longitude	277° 50' 16.08865" E
W Longitude	82° 09' 43.91135" W
Ellipsoid Height	15.749 M
Cartesian Coordinates*	
X = 770090.826 M	
Y = -5594346.953 M	
Z = 2955033.694 M	

State Plane Coordinates*	
Zone: -	
N: - M	
E: - M	
UTM Coordinates*	
Zone: -	
N: - M	
E: - M	
UTM Coordinates*	
Zone: 17	
N: 3073451.700 M	
E: 385494.831 M	

FPRN Datasheet
For
Gun Range (FLGR)



* Positions and Coordinates were calculated using OPUS Projects software published by National Geodetic Survey (NGS).
** FPRN18 Orthometric Heights were calculated using Infinity software published by Leica Geosystems.



NAD 83 (2011) epoch 2010.000

After 9/6/2019

Geodetic Position*	
Latitude	27° 46' 50.51898" N
W Longitude	82° 09' 43.88861" W
Ellipsoid Height	17.288 M
Cartesian Coordinates*	
X = 770091.669 M	
Y = -5594348.509 M	
Z = 2955033.852 M	

State Plane Coordinates*											
Zone: FL W											
N: 381918.611 M											
E: 184015.310 M				UTM Coordinates*		Zone: 17		N: 3073451.063 M		E: 385495.448 M	
UTM Coordinates*											
Zone: 17											
N: 3073451.063 M											
E: 385495.448 M											

ITRF 2014 epoch 2019.078

After 9/6/2019

Geodetic Position*	
Latitude	27° 46' 50.53950" N
E Longitude	277° 50' 16.089" E
W Longitude	82° 09' 43.91100" W
Ellipsoid Height	15.746 M
Cartesian Coordinates*	
X = 770090.836 M	
Y = -5594346.950 M	
Z = 2955033.692 M	

State Plane Coordinates*																											
Zone: -																											
N: - M																											
E: - M				Zone: -		N: - M		E: - M				Zone: -		N: - M		E: - M				UTM Coordinates*		Zone: 17		N: 3073451.700 M		E: 385494.841 M	
Zone: -																											
N: - M																											
E: - M				Zone: -		N: - M		E: - M				UTM Coordinates*		Zone: 17		N: 3073451.700 M		E: 385494.841 M									
Zone: -																											
N: - M																											
E: - M				UTM Coordinates*		Zone: 17		N: 3073451.700 M		E: 385494.841 M																	
UTM Coordinates*																											
Zone: 17																											
N: 3073451.700 M																											
E: 385494.841 M																											

NAD 83 (2011) epoch 2010.000

After 8/16/2018

Geodetic Position*	
Latitude	27° 46' 50.51897" N
W. Longitude	82° 09' 43.88909" W
Ellipsoid Height	17.287 M
Cartesian Coordinates*	
X = 770091.656 M	
Y = -5594348.510 M	
Z = 2955033.851 M	

State Plane Coordinates*											
Zone: FL W											
N: 381918.610 M											
E: 184015.297 M				UTM Coordinates*		Zone: 17		N: 3073451.062 M		E: 385495.435 M	
UTM Coordinates*											
Zone: 17											
N: 3073451.062 M											
E: 385495.435 M											



NAD 83 (2011) epoch 2010.000

After 8/25/2015

Geodetic Position*	
Latitude	27° 46' 50.51908" N
W. Longitude	82° 09' 43.88864" W
Ellipsoid Height	17.355 M
Cartesian Coordinates*	
X = 770091.676 M	
Y = -5594348.566 M	
Z = 2955033.886 M	

State Plane Coordinates*									
Zone: FL W									
N: 381918.610 M									
E: 184015.297 M		UTM Coordinates*		Zone: 17		N: 3073451.066 M		E: 385495.447 M	
UTM Coordinates*									
Zone: 17									
N: 3073451.066 M									
E: 385495.447 M									

NAD 83 (2011) epoch 2010.000

After 8/2/2014

Geodetic Position*	
Latitude	- N
W. Longitude	- W
Ellipsoid Height	0.000 M
Cartesian Coordinates*	
X = 0.000 M	
Y = 0.000 M	
Z = 0.000 M	

State Plane Coordinates*									
Zone: FL W									
N: 0.000 M									
E: 0.000 M		UTM Coordinates*		Zone: 17		N: 0.000 M		E: 0.000 M	
UTM Coordinates*									
Zone: 17									
N: 0.000 M									
E: 0.000 M									

NAD 83 (CORS96)

Prior to 8/2/2014

Geodetic Position*	
Latitude	- N
W. Longitude	- W
Ellipsoid Height	0.000 M
Cartesian Coordinates*	
X = 0.000 M	
Y = 0.000 M	
Z = 0.000 M	

State Plane Coordinates*									
Zone: FL W									
N: 0.000 M									
E: 0.000 M		UTM Coordinates*		Zone: 17		N: 0.000 M		E: 0.000 M	
UTM Coordinates*									
Zone: 17									
N: 0.000 M									
E: 0.000 M									