


FPRN Datasheet

Site Name:	Indian Rocks		
Site Code:	FLIB		
RTCM Code:	0710		
Receiver Type:	LEICA GR30		
Serial Number:	1702059		
Firmware:	4.30		
Antenna Type:	LEIAR20	NONE	
Serial Number:	16268029		
Satellite Systems:	G/R/E/-/-		

NAVD 88 Orthometric Height

Leveled	Geoid 18*	FPRN18**
- M	8.406 M	8.409 M

NAD 83 (2011) epoch 2010.000 Current Broadcast Datum of FPRN

After 1/6/2020

Geodetic Position*	
Latitude	27°52'47.86681" N
E Longitude	277°09'26.32503" E
W Longitude	82°50'33.67497" W
Ellipsoid Height	-16.018 M
Cartesian Coordinates*	
X = 702951.890 M	
Y = -5597975.402 M	
Z = 2964746.004 M	

State Plane Coordinates*	
Zone: FL W	
N: 393192.805 M	
E: 117023.201 M	
UTM Coordinates*	
Zone: 17	
N: 3085269.696 M	
E: 318604.223 M	

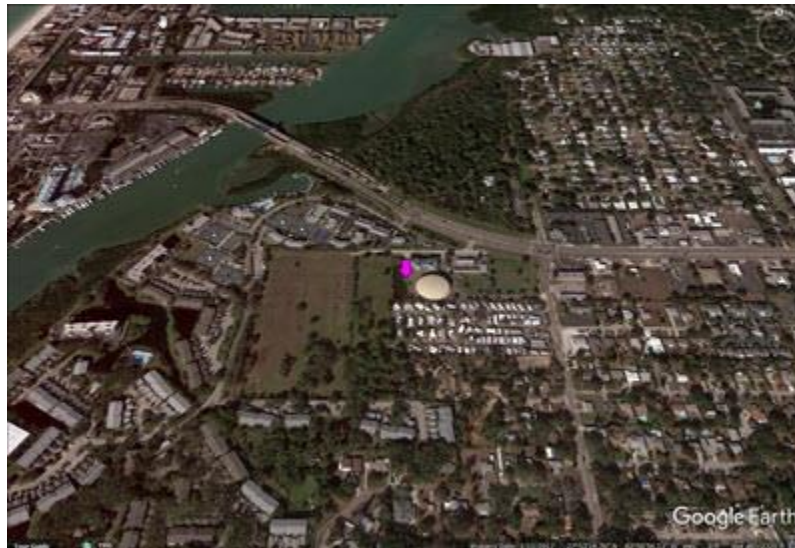
ITRF 2014 epoch 2019.836

After 1/6/2020

Geodetic Position*	
Latitude	27° 52' 47.88694" N
E Longitude	277° 09' 26.30210" E
W Longitude	82° 50' 33.69790" W
Ellipsoid Height	-17.562 M
Cartesian Coordinates*	
X = 702951.061 M	
Y = -5597973.839 M	
Z = 2964745.830 M	

State Plane Coordinates*	
Zone: -	
N: - M	
E: - M	
UTM Coordinates*	
Zone: -	
N: - M	
E: - M	
UTM Coordinates*	
Zone: 17	
N: 3085270.325 M	
E: 318603.606 M	

FPRN Datasheet
For
Indian Roacks (FLIB)



* Positions and Coordinates were calculated using OPUS Projects software published by National Geodetic Survey (NGS).
** FPRN18 Orthometric Heights were calculated using Infinity software published by Leica Geosystems.



NAD 83 (2011) epoch 2010.000

After 9/6/2019

Geodetic Position*	
Latitude	27° 52' 47.86667" N
W Longitude	82° 50' 33.67422" W
Ellipsoid Height	-16.123 M
Cartesian Coordinates*	
X = 702951.899 M	
Y = -5597975.309 M	
Z = 2964745.951 M	

State Plane Coordinates*									
Zone: FL W									
N: 393192.801 M									
E: 117023.221 M		UTM Coordinates*		Zone: 17		N: 3085269.691 M		E: 318604.244 M	
UTM Coordinates*									
Zone: 17									
N: 3085269.691 M									
E: 318604.244 M									

ITRF 2014 epoch 2019.078

After 9/6/2019

Geodetic Position*	
Latitude	27° 52' 47.88702" N
E Longitude	277° 9' 26.30264" E
W Longitude	82° 50' 33.69736" W
Ellipsoid Height	-17.655 M
Cartesian Coordinates*	
X = 702951.066 M	
Y = -5597973.754 M	
Z = 2964745.788 M	

State Plane Coordinates*																									
Zone: -																									
N: - M																									
E: - M		UTM Coordinates*		Zone: -		N: - M		E: - M		UTM Coordinates*		Zone: -		N: - M		E: - M		UTM Coordinates*		Zone: 17		N: 3085270.327 M		E: 318603.621 M	
UTM Coordinates*																									
Zone: -																									
N: - M																									
E: - M		UTM Coordinates*		Zone: -		N: - M		E: - M		UTM Coordinates*		Zone: 17		N: 3085270.327 M		E: 318603.621 M									
UTM Coordinates*																									
Zone: -																									
N: - M																									
E: - M		UTM Coordinates*		Zone: 17		N: 3085270.327 M		E: 318603.621 M																	
UTM Coordinates*																									
Zone: 17																									
N: 3085270.327 M																									
E: 318603.621 M																									

NAD 83 (2011) epoch 2010.000

After 8/16/2018

Geodetic Position*	
Latitude	27° 52' 47.86646 N
W. Longitude	82° 50' 33.67495 W
Ellipsoid Height	-16.038 M
Cartesian Coordinates*	
X = 702951.889 M	
Y = -5597975.389 M	
Z = 2964745.985 M	

State Plane Coordinates*									
Zone: FL W									
N: 393192.794 M									
E: 117023.201 M		UTM Coordinates*		Zone: 17		N: 3085269.685 M		E: 318604.224 M	
UTM Coordinates*									
Zone: 17									
N: 3085269.685 M									
E: 318604.224 M									



NAD 83 (2011) epoch 2010.000

After 8/25/2015

Geodetic Position*	
Latitude	27° 52' 47.86646" N
W. Longitude	82° 50' 33.67495" W
Ellipsoid Height	-16.038 M
Cartesian Coordinates*	
X = 702951.889 M	
Y = -5597975.389 M	
Z = 2964745.985 M	

State Plane Coordinates*	
Zone: FL W	
N: 393192.794 M	
E: 117023.201 M	
UTM Coordinates*	
Zone: 17	
N: 3085269.685 M	
E: 318604.224 M	

NAD 83 (2011) epoch 2010.000

After 8/2/2014

Geodetic Position*	
Latitude	- N
W. Longitude	- W
Ellipsoid Height	0.000 M
Cartesian Coordinates*	
X = 0.000 M	
Y = 0.000 M	
Z = 0.000 M	

State Plane Coordinates*	
Zone: FL W	
N: 0.000 M	
E: 0.000 M	
UTM Coordinates*	
Zone: 17	
N: 0.000 M	
E: 0.000 M	

NAD 83 (CORS96)

Prior to 8//2014

Geodetic Position*	
Latitude	- N
W. Longitude	- W
Ellipsoid Height	0.000 M
Cartesian Coordinates*	
X = 0.000 M	
Y = 0.000 M	
Z = 0.000 M	

State Plane Coordinates*	
Zone: FL W	
N: 0.000 M	
E: 0.000 M	
UTM Coordinates*	
Zone: 17	
N: 0.000 M	
E: 0.000 M	