


FPRN Datasheet

Site Name:	Port St. Joe	 <p>FDOT Florida Permanent Reference Network</p>
Site Code:	FLJO	
RTCM Code:	0307	
Receiver Type:	LEICA GR30	
Serial Number:	1702043	
Firmware:	4.30	
Antenna Type:	LEIAR20 NONE	
Serial Number:	16226006	
Satellite Systems:	G/R/E/-/-	

NAVD 88 Orthometric Height

Leveled	Geoid 18*	FPRN18**
- M	7.777 M	7.790 M

NAD 83 (2011) epoch 2010.000 Current Broadcast Datum of FPRN

After 1/6/2020

Geodetic Position*	
Latitude	29°48'47.71988" N
E Longitude	274°42'35.59061" E
W Longitude	85°17'24.40939" W
Ellipsoid Height	-19.465 M
Cartesian Coordinates*	
X = 454773.869 M	
Y = -5519858.485 M	
Z = 3152419.814 M	

State Plane Coordinates*	
Zone: FL N	
N: 90411.901 M	
E: 523625.638 M	
UTM Coordinates*	
Zone: 16	
N: 3299318.892 M	
E: 665234.961 M	

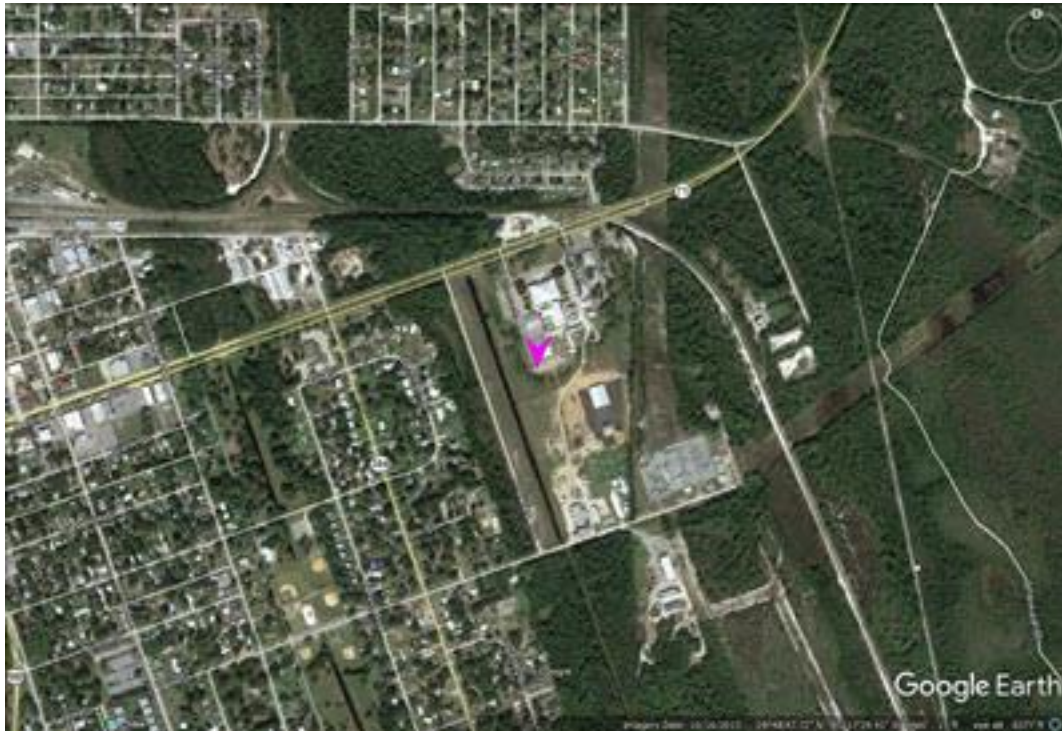
ITRF 2014 epoch 2019.837

After 1/6/2020

Geodetic Position*	
Latitude	29° 48' 47.74075" N
E Longitude	274° 42' 35.56415" E
W Longitude	85° 17' 24.43585" W
Ellipsoid Height	-20.923 M
Cartesian Coordinates*	
X = 454773.031 M	
Y = -5519856.964 M	
Z = 3152419.646 M	

State Plane Coordinates*	
Zone: -	
N: - M	
E: - M	
UTM Coordinates*	
Zone: -	
N: - M	
E: - M	
UTM Coordinates*	
Zone: 16	
N: 3299319.524 M	
E: 665234.241 M	

FPRN Datasheet
For
Port St. Joe (FLJO)



* Positions and Coordinates were calculated using OPUS Projects software published by National Geodetic Survey (NGS).
** FPRN18 Orthometric Heights were calculated using Infinity software published by Leica Geosystems.



NAD 83 (2011) epoch 2010.000

After 9/6/2019

Geodetic Position*	
Latitude	29° 48' 47.71969" N
W Longitude	85° 17' 24.40888" W
Ellipsoid Height	-19.481 M
Cartesian Coordinates*	
X = 454773.882 M	
Y = -5519858.473 M	
Z = 3152419.801 M	

State Plane Coordinates*									
Zone: FL N									
N: 90411.895 M									
E: 523625.652 M		UTM Coordinates*		Zone: 16		N: 3299318.887 M		E: 665234.975 M	
UTM Coordinates*									
Zone: 16									
N: 3299318.887 M									
E: 665234.975 M									

ITRF 2014 epoch 2019.078

After 9/6/2019

Geodetic Position*	
Latitude	29° 48' 47.74069" N
E Longitude	274° 42' 35.56445" E
W Longitude	85° 17' 24.43555" W
Ellipsoid Height	-20.933 M
Cartesian Coordinates*	
X = 454773.038 M	
Y = -5519856.955 M	
Z = 3152419.640 M	

State Plane Coordinates*																									
Zone: -																									
N: - M																									
E: - M		UTM Coordinates*		Zone: -		N: - M		E: - M		UTM Coordinates*		Zone: -		N: - M		E: - M		UTM Coordinates*		Zone: 16		N: 3299319.522 M		E: 665234.249 M	
UTM Coordinates*																									
Zone: -																									
N: - M																									
E: - M		UTM Coordinates*		Zone: -		N: - M		E: - M		UTM Coordinates*		Zone: 16		N: 3299319.522 M		E: 665234.249 M									
UTM Coordinates*																									
Zone: -																									
N: - M																									
E: - M																									
UTM Coordinates*																									
Zone: 16																									
N: 3299319.522 M																									
E: 665234.249 M																									

NAD 83 (2011) epoch 2010.000

After 8/16/2018

Geodetic Position*	
Latitude	29° 48' 47.72000" N
W. Longitude	85° 17' 24.40918" W
Ellipsoid Height	-19.471 M
Cartesian Coordinates*	
X = 454773.874 M	
Y = -5519858.477 M	
Z = 3152419.814 M	

State Plane Coordinates*									
Zone: FL N									
N: 90411.905 M									
E: 523625.643 M		UTM Coordinates*		Zone: 16		N: 3299318.896 M		E: 665234.967 M	
UTM Coordinates*									
Zone: 16									
N: 3299318.896 M									
E: 665234.967 M									



NAD 83 (2011) epoch 2010.000

After 8/25/2015

Geodetic Position*	
Latitude	29° 48' 47.72000" N
W. Longitude	85° 17' 24.40918" W
Ellipsoid Height	-19.471 M
Cartesian Coordinates*	
X = 454773.874 M	
Y = -5519858.477 M	
Z = 3152419.814 M	

State Plane Coordinates*	
Zone: FL N	
N: 90411.905 M	
E: 523625.643 M	
UTM Coordinates*	
Zone: 16	
N: 3299318.896 M	
E: 665234.967 M	

NAD 83 (2011) epoch 2010.000

After 8/2/2014

Geodetic Position*	
Latitude	29° 48' 47.71979" N
W. Longitude	85° 17' 24.40918" W
Ellipsoid Height	-19.467 M
Cartesian Coordinates*	
X = 454773.875 M	
Y = -5519858.484 M	
Z = 3152419.810 M	

State Plane Coordinates*	
Zone: FL N	
N: 90411.899 M	
E: 523625.643 M	
UTM Coordinates*	
Zone: 16	
N: 3299318.889 M	
E: 665234.967 M	

NAD 83 (CORS96)

Prior to 8/2/2014

Geodetic Position*	
Latitude	29° 48' 47.72084" N
W. Longitude	85° 17' 24.40927" W
Ellipsoid Height	-19.463 M
Cartesian Coordinates*	
X = 454773.871 M	
Y = -5519858.472 M	
Z = 3152419.841 M	

State Plane Coordinates*	
Zone: FL N	
N: 90411.931 M	
E: 523625.641 M	
UTM Coordinates*	
Zone: 16	
N: 3299318.922 M	
E: 665234.964 M	