


## FPRN Datasheet

Site Name:	Kissimmee 2	 <p><b>FDOT</b> Florida Permanent Reference Network</p>
Site Code:	FLKS	
RTCM Code:	0516	
Receiver Type:	LEICA GR30	
Serial Number:	1702000	
Firmware:	4.30	
Antenna Type:	LEIAR20 NONE	
Serial Number:	16330005	
Satellite Systems:	G/R/E/-/-	

### NAVD 88 Orthometric Height

<b>Leveled</b>	<b>Geoid 18*</b>	<b>FPRN18**</b>
- M	29.668 M	29.656 M

### NAD 83 (2011) epoch 2010.000 Current Broadcast Datum of FPRN

After 1/6/2020

Geodetic Position*	
Latitude	28°17'44.20059" N
E Longitude	278°33'49.13282" E
W Longitude	81°26'10.86718" W
Ellipsoid Height	1.882 M
Cartesian Coordinates*	
X = 836902.639 M	
Y = -5557606.991 M	
Z = 3005391.892 M	

State Plane Coordinates*	
Zone: FL E	
N: 439044.501 M	
E: 157199.589 M	
UTM Coordinates*	
Zone: 17	
N: 3130026.682 M	
E: 457214.193 M	

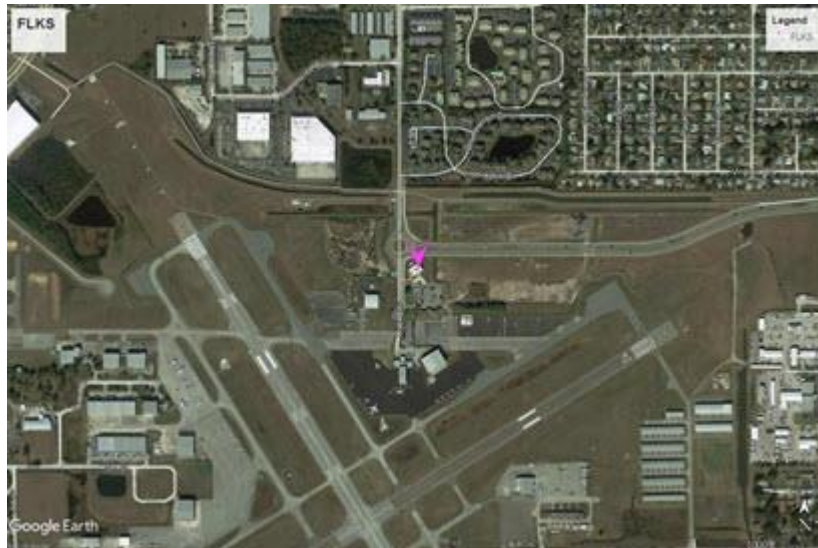
### ITRF 2014 epoch 2019.836

After 1/6/2020

Geodetic Position*	
Latitude	28° 17' 44.22165" N
E Longitude	278° 33' 49.11107" E
W Longitude	81° 26' 10.88893" W
Ellipsoid Height	0.333 M
Cartesian Coordinates*	
X = 836901.804 M	
Y = -5557605.426 M	
Z = 3005391.728 M	

State Plane Coordinates*	
Zone: -	
N: - M	
E: - M	
UTM Coordinates*	
Zone: -	
N: - M	
E: - M	
UTM Coordinates*	
Zone: 17	
N: 3130027.332 M	
E: 457213.603 M	

FPRN Datasheet  
For  
Kissimmee 2 (FLKS)



\* Positions and Coordinates were calculated using OPUS Projects software published by National Geodetic Survey (NGS).  
\*\* FPRN18 Orthometric Heights were calculated using Infinity software published by Leica Geosystems.



### NAD 83 (2011) epoch 2010.000

After 9/6/2019

Geodetic Position*	
Latitude	28° 17' 44.20039" N
W Longitude	81° 26' 10.86675" W
Ellipsoid Height	1.868 M
Cartesian Coordinates*	
X = 836902.649 M	
Y = -5557606.980 M	
Z = 3005391.880 M	

State Plane Coordinates*											
Zone: FL E											
N: 439044.495 M											
E: 157199.601 M				UTM Coordinates*		Zone: 17		N: 3130026.676 M		E: 457214.204 M	
UTM Coordinates*											
Zone: 17											
N: 3130026.676 M											
E: 457214.204 M											

### ITRF 2014 epoch 2019.078

After 9/6/2019

Geodetic Position*	
Latitude	28° 17' 44.22165" N
E Longitude	278° 33' 49.11141" E
W Longitude	81° 26' 10.88859" W
Ellipsoid Height	0.331 M
Cartesian Coordinates*	
X = 836901.813 M	
Y = -5557605.424 M	
Z = 3005391.728 M	

State Plane Coordinates*																											
Zone: -																											
N: - M																											
E: - M				Zone: -		N: - M		E: - M				Zone: -		N: - M		E: - M				UTM Coordinates*		Zone: 17		N: 3130027.332 M		E: 457213.612 M	
Zone: -																											
N: - M																											
E: - M				Zone: -		N: - M		E: - M				UTM Coordinates*		Zone: 17		N: 3130027.332 M		E: 457213.612 M									
Zone: -																											
N: - M																											
E: - M				UTM Coordinates*		Zone: 17		N: 3130027.332 M		E: 457213.612 M																	
UTM Coordinates*																											
Zone: 17																											
N: 3130027.332 M																											
E: 457213.612 M																											

### NAD 83 (2011) epoch 2010.000

After 8/16/2018

Geodetic Position*	
Latitude	- N
W. Longitude	- W
Ellipsoid Height	0.000 M
Cartesian Coordinates*	
X = 0.000 M	
Y = 0.000 M	
Z = 0.000 M	

State Plane Coordinates*											
Zone: FL E											
N: 0.000 M											
E: 0.000 M				UTM Coordinates*		Zone: 17		N: 0.000 M		E: 0.000 M	
UTM Coordinates*											
Zone: 17											
N: 0.000 M											
E: 0.000 M											



### NAD 83 (2011) epoch 2010.000

After 8/25/2015

Geodetic Position*	
Latitude	- N
W. Longitude	- W
Ellipsoid Height	0.000 M
Cartesian Coordinates*	
X	= 0.000 M
Y	= 0.000 M
Z	= 0.000 M

State Plane Coordinates*	
Zone: FL E	
N: 0.000 M	
E: 0.000 M	
UTM Coordinates*	
Zone: 17	
N: 0.000 M	
E: 0.000 M	

### NAD 83 (2011) epoch 2010.000

After 8/2/2014

Geodetic Position*	
Latitude	- N
W. Longitude	- W
Ellipsoid Height	0.000 M
Cartesian Coordinates*	
X	= 0.000 M
Y	= 0.000 M
Z	= 0.000 M

State Plane Coordinates*	
Zone: FL E	
N: 0.000 M	
E: 0.000 M	
UTM Coordinates*	
Zone: 17	
N: 0.000 M	
E: 0.000 M	

### NAD 83 (CORS96)

Prior to 8/2/2014

Geodetic Position*	
Latitude	- N
W. Longitude	- W
Ellipsoid Height	0.000 M
Cartesian Coordinates*	
X	= 0.000 M
Y	= 0.000 M
Z	= 0.000 M

State Plane Coordinates*	
Zone: FL E	
N: 0.000 M	
E: 0.000 M	
UTM Coordinates*	
Zone: 17	
N: 0.000 M	
E: 0.000 M	