


FPRN Datasheet

Site Name:	Moultrie	 <p>FDOT Florida Permanent Reference Network</p>
Site Code:	GAMO	
RTCM Code:		
Receiver Type:	-	
Serial Number:	0	
Firmware:	-	
Antenna Type:	-	
Serial Number:	-	
Satellite Systems:	-	

NAVD 88 Orthometric Height

Leveled	Geoid 18*	FPRN18**
- M	0.000 M	- M

NAD 83 (2011) epoch 2010.000 Current Broadcast Datum of FPRN

After 1/6/2020

Geodetic Position*	
Latitude	- N
E Longitude	- E
W Longitude	- W
Ellipsoid Height	0.000 M
Cartesian Coordinates*	
X = 0.000 M	
Y = 0.000 M	
Z = 0.000 M	

State Plane Coordinates*	
Zone: GA W	
N: 0.000 M	
E: 0.000 M	
UTM Coordinates*	
Zone: 17	
N: 0.000 M	
E: 0.000 M	

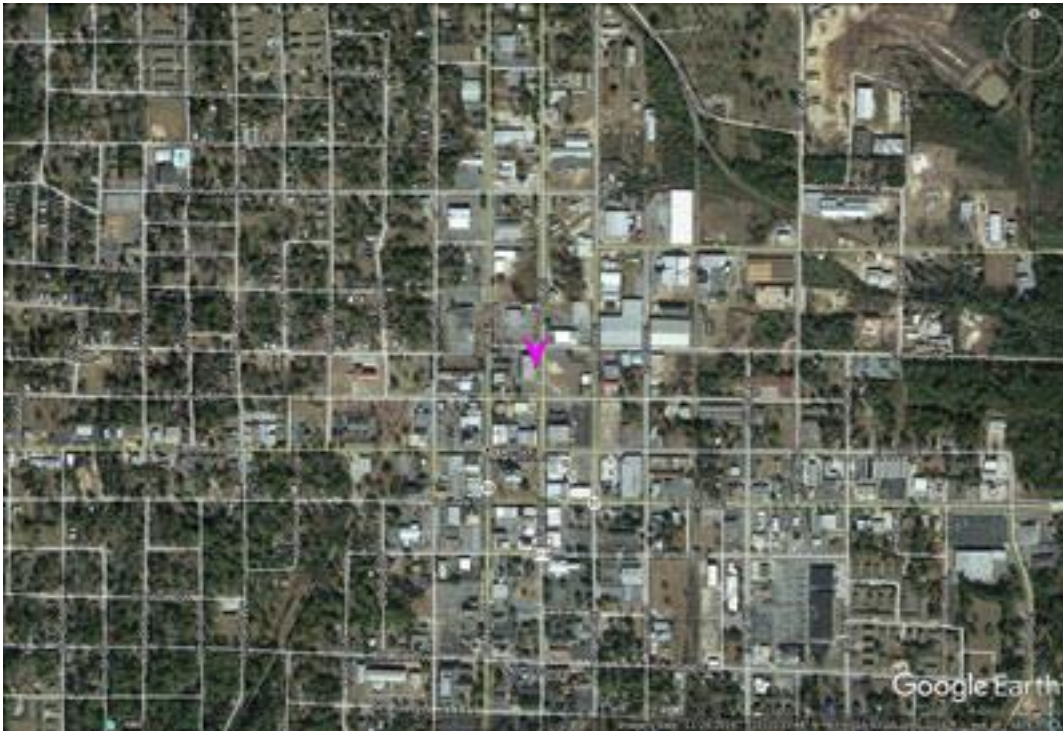
ITRF 2014 epoch 0.000

After 1/6/2020

Geodetic Position*	
Latitude	- N
E Longitude	- E
W Longitude	- W
Ellipsoid Height	0.000 M
Cartesian Coordinates*	
X = 0.000 M	
Y = 0.000 M	
Z = 0.000 M	

State Plane Coordinates*	
Zone: -	
N: - M	
E: - M	
Zone: -	
N: - M	
E: - M	
Zone: -	
N: - M	
E: - M	
UTM Coordinates*	
Zone: 17	
N: 0.000 M	
E: 0.000 M	

**SITE
DECOMMISSIONED
NOT
OPERATIONAL**



* Positions and Coordinates were calculated using OPUS Projects software published by National Geodetic Survey (NGS).
** FPRN18 Orthometric Heights were calculated using Infinity software published by Leica Geosystems.



NAD 83 (2011) epoch 2010.000

After 9/6/2019

Geodetic Position*	
Latitude	- N
W Longitude	- W
Ellipsoid Height	0.000 M
Cartesian Coordinates*	
X = 0.000 M	
Y = 0.000 M	
Z = 0.000 M	

State Plane Coordinates*											
Zone: GA W											
N: 0.000 M											
E: 0.000 M				UTM Coordinates*		Zone: 17		N: 0.000 M		E: 0.000 M	
UTM Coordinates*											
Zone: 17											
N: 0.000 M											
E: 0.000 M											

ITRF 2014 epoch 2019.078

After 9/6/2019

Geodetic Position*	
Latitude	- N
E Longitude	- E
W Longitude	- W
Ellipsoid Height	0.000 M
Cartesian Coordinates*	
X = 0.000 M	
Y = 0.000 M	
Z = 0.000 M	

State Plane Coordinates*																											
Zone: -																											
N: - M																											
E: - M				Zone: -		N: - M		E: - M				Zone: -		N: - M		E: - M				UTM Coordinates*		Zone: 17		N: 0.000 M		E: 0.000 M	
Zone: -																											
N: - M																											
E: - M				Zone: -		N: - M		E: - M				UTM Coordinates*		Zone: 17		N: 0.000 M		E: 0.000 M									
Zone: -																											
N: - M																											
E: - M				UTM Coordinates*		Zone: 17		N: 0.000 M		E: 0.000 M																	
UTM Coordinates*																											
Zone: 17																											
N: 0.000 M																											
E: 0.000 M																											

NAD 83 (2011) epoch 2010.000

After 8/16/2018

Geodetic Position*	
Latitude	31° 10' 53.48323" N
W. Longitude	83° 47' 15.92812" W
Ellipsoid Height	77.992 M
Cartesian Coordinates*	
X = 591016.447 M	
Y = -5429593.463 M	
Z = 3283168.501 M	

State Plane Coordinates*											
Zone: GA W											
N: 131035.311 M											
E: 736115.192 M				UTM Coordinates*		Zone: 17		N: 3453067.614 M		E: 234320.223 M	
UTM Coordinates*											
Zone: 17											
N: 3453067.614 M											
E: 234320.223 M											



NAD 83 (2011) epoch 2010.000

After 8/25/2015

Geodetic Position*	
Latitude	31° 10' 53.48323" N
W. Longitude	83° 47' 15.92812" W
Ellipsoid Height	77.992 M
Cartesian Coordinates*	
X = 591016.447 M	
Y = -5429593.463 M	
Z = 3283168.501 M	

State Plane Coordinates*											
Zone: GA W											
N: 131035.311 M											
E: 736115.192 M				UTM Coordinates*		Zone: 17		N: 3453067.614 M		E: 234320.223 M	
UTM Coordinates*											
Zone: 17											
N: 3453067.614 M											
E: 234320.223 M											

NAD 83 (2011) epoch 2010.000

After 8/2/2014

Geodetic Position*	
Latitude	31° 10' 53.48312" N
W. Longitude	83° 47' 15.92810" W
Ellipsoid Height	77.954 M
Cartesian Coordinates*	
X = 591016.444 M	
Y = -5429593.433 M	
Z = 3283168.479 M	

State Plane Coordinates*											
Zone: GA W											
N: 131035.308 M											
E: 736115.193 M				UTM Coordinates*		Zone: 17		N: 3453067.611 M		E: 234320.223 M	
UTM Coordinates*											
Zone: 17											
N: 3453067.611 M											
E: 234320.223 M											

NAD 83 (CORS96)

Prior to 8/2/2014

Geodetic Position*	
Latitude	31° 10' 53.48310" N
W. Longitude	83° 47' 15.92944" W
Ellipsoid Height	77.983 M
Cartesian Coordinates*	
X = 591016.412 M	
Y = -5429593.462 M	
Z = 3283168.493 M	

State Plane Coordinates*											
Zone: GA W											
N: 131035.307 M											
E: 736115.157 M				UTM Coordinates*		Zone: 17		N: 3453067.611 M		E: 234320.188 M	
UTM Coordinates*											
Zone: 17											
N: 3453067.611 M											
E: 234320.188 M											