


FPRN Datasheet

Site Name:	Thomasville	 <p>FDOT Florida Permanent Reference Network</p>
Site Code:	GATV	
RTCM Code:	0358	
Receiver Type:	LEICA GRX1200+GNSS	
Serial Number:	496193	
Firmware:	8.10	
Antenna Type:	LEIAS10 NONE	
Serial Number:	-	
Satellite Systems:	G/R/-/-/-	

NAVD 88 Orthometric Height

Leveled	Geoid 18*	FPRN18**
- M	87.511 M	- M

NAD 83 (2011) epoch 2010.000 Current Broadcast Datum of FPRN

After 1/6/2020

Geodetic Position*	
Latitude	30°50'00.87471" N
E Longitude	276°01'02.46401" E
W Longitude	83°58'57.53599" W
Ellipsoid Height	59.900 M
Cartesian Coordinates*	
X = 574626.007 M	
Y = -5451320.492 M	
Z = 3250094.787 M	

State Plane Coordinates*	
Zone: GA W	
N: 92415.106 M	
E: 717603.184 M	
UTM Coordinates*	
Zone: 17	
N: 3414966.488 M	
E: 214703.356 M	

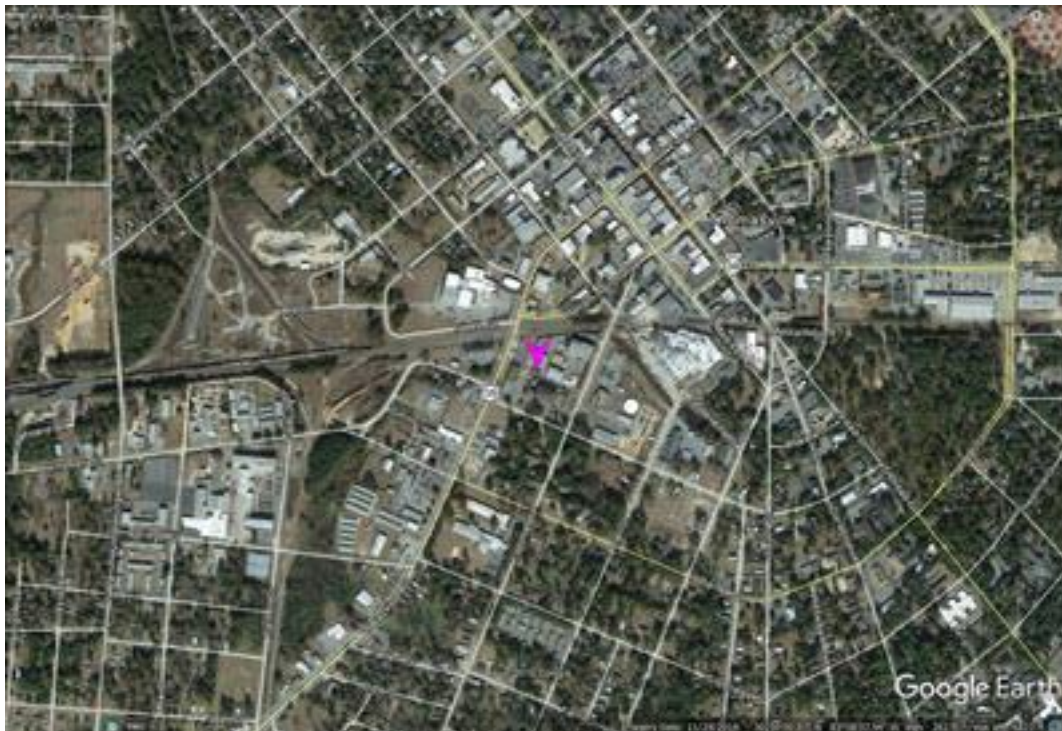
ITRF 2014 epoch 2019.837

After 1/6/2020

Geodetic Position*	
Latitude	30° 50' 00.89701" N
E Longitude	276° 01' 02.43848" E
W Longitude	83° 58' 57.56152" W
Ellipsoid Height	58.451 M
Cartesian Coordinates*	
X = 574625.165 M	
Y = -5451318.975 M	
Z = 3250094.634 M	

State Plane Coordinates*	
Zone: -	
N: - M	
E: - M	
UTM Coordinates*	
Zone: -	
N: - M	
E: - M	
UTM Coordinates*	
Zone: 17	
N: 3414967.193 M	
E: 214702.696 M	

FPRN Datasheet
For
Thomasville (GATV)



* Positions and Coordinates were calculated using OPUS Projects software published by National Geodetic Survey (NGS).
** FPRN18 Orthometric Heights were calculated using Infinity software published by Leica Geosystems.



NAD 83 (2011) epoch 2010.000

After 9/6/2019

Geodetic Position*	
Latitude	30° 50' 00.87462" N
W Longitude	83° 58' 57.53528" W
Ellipsoid Height	59.891 M
Cartesian Coordinates*	
X = 574626.025 M	
Y = -5451320.484 M	
Z = 3250094.780 M	

State Plane Coordinates*									
Zone: GA W									
N: 92415.103 M									
E: 717603.202 M		UTM Coordinates*		Zone: 17		N: 3414966.484 M		E: 214703.375 M	
UTM Coordinates*									
Zone: 17									
N: 3414966.484 M									
E: 214703.375 M									

ITRF 2014 epoch 2019.078

After 9/6/2019

Geodetic Position*	
Latitude	30° 50' 00.89697" N
E Longitude	276° 1' 2.43884" E
W Longitude	83° 58' 57.56116" W
Ellipsoid Height	58.449 M
Cartesian Coordinates*	
X = 574625.174 M	
Y = -5451318.974 M	
Z = 3250094.632 M	

State Plane Coordinates*																									
Zone: -																									
N: - M																									
E: - M		UTM Coordinates*		Zone: -		N: - M		E: - M		UTM Coordinates*		Zone: -		N: - M		E: - M		UTM Coordinates*		Zone: 17		N: 3414967.191 M		E: 214702.705 M	
UTM Coordinates*																									
Zone: -																									
N: - M																									
E: - M		UTM Coordinates*		Zone: -		N: - M		E: - M		UTM Coordinates*		Zone: 17		N: 3414967.191 M		E: 214702.705 M									
UTM Coordinates*																									
Zone: -																									
N: - M																									
E: - M		UTM Coordinates*		Zone: 17		N: 3414967.191 M		E: 214702.705 M																	
UTM Coordinates*																									
Zone: 17																									
N: 3414967.191 M																									
E: 214702.705 M																									

NAD 83 (2011) epoch 2010.000

After 8/16/2018

Geodetic Position*	
Latitude	30° 50' 00.87472" N
W. Longitude	83° 58' 57.53564" W
Ellipsoid Height	59.886 M
Cartesian Coordinates*	
X = 574626.015 M	
Y = -5451320.479 M	
Z = 3250094.780 M	

State Plane Coordinates*									
Zone: GA W									
N: 92415.106 M									
E: 717603.193 M		UTM Coordinates*		Zone: 17		N: 3414966.488 M		E: 214703.365 M	
UTM Coordinates*									
Zone: 17									
N: 3414966.488 M									
E: 214703.365 M									



NAD 83 (2011) epoch 2010.000

After 8/25/2015

Geodetic Position*	
Latitude	30° 50' 00.87472" N
W. Longitude	83° 58' 57.53564" W
Ellipsoid Height	59.886 M
Cartesian Coordinates*	
X = 574626.015 M	
Y = -5451320.479 M	
Z = 3250094.780 M	

State Plane Coordinates*									
Zone: GA W									
N: 92415.106 M									
E: 717603.193 M		UTM Coordinates*		Zone: 17		N: 3414966.488 M		E: 214703.365 M	
UTM Coordinates*									
Zone: 17									
N: 3414966.488 M									
E: 214703.365 M									

NAD 83 (2011) epoch 2010.000

After 8/2/2014

Geodetic Position*	
Latitude	30° 50' 00.87439" N
W. Longitude	83° 58' 57.53526" W
Ellipsoid Height	59.858 M
Cartesian Coordinates*	
X = 574626.023 M	
Y = -5451320.459 M	
Z = 3250094.757 M	

State Plane Coordinates*									
Zone: GA W									
N: 92415.096 M									
E: 717603.203 M		UTM Coordinates*		Zone: 17		N: 3414966.477 M		E: 214703.375 M	
UTM Coordinates*									
Zone: 17									
N: 3414966.477 M									
E: 214703.375 M									

NAD 83 (CORS96)

Prior to 8/2/2014

Geodetic Position*	
Latitude	30° 50' 00.87470" N
W. Longitude	83° 58' 57.53647" W
Ellipsoid Height	59.903 M
Cartesian Coordinates*	
X = 574625.995 M	
Y = -5451320.496 M	
Z = 3250094.788 M	

State Plane Coordinates*									
Zone: GA W									
N: 92415.105 M									
E: 717603.171 M		UTM Coordinates*		Zone: 17		N: 3414966.488 M		E: 214703.343 M	
UTM Coordinates*									
Zone: 17									
N: 3414966.488 M									
E: 214703.343 M									