


## FPRN Datasheet

Site Name:	Immokalee	
Site Code:	IMMO	
RTCM Code:	0153	
Receiver Type:	LEICA GX1230GG	
Serial Number:	0	
Firmware:	-	
Antenna Type:	LEIAT504 LEIS	
Serial Number:	-	
Satellite Systems:	G/-/-/-/-	

### NAVD 88 Orthometric Height

<b>Leveled</b>	<b>Geoid 18*</b>	<b>FPRN18**</b>
- M	16.256 M	16.258 M

### NAD 83 (2011) epoch 2010.000 Current Broadcast Datum of FPRN

After 1/6/2020

Geodetic Position*	
Latitude	26°25'04.22107" N
E Longitude	278°34'59.75279" E
W Longitude	81°25'00.24721" W
Ellipsoid Height	-8.137 M
Cartesian Coordinates*	
X = 853073.820 M	
Y = -5651852.554 M	
Z = 2820591.749 M	

State Plane Coordinates*	
Zone: FL E	
N: 230972.295 M	
E: 158428.338 M	
UTM Coordinates*	
Zone: 17	
N: 2922025.470 M	
E: 458442.522 M	

### ITRF 2014 epoch 2019.836

After 1/6/2020

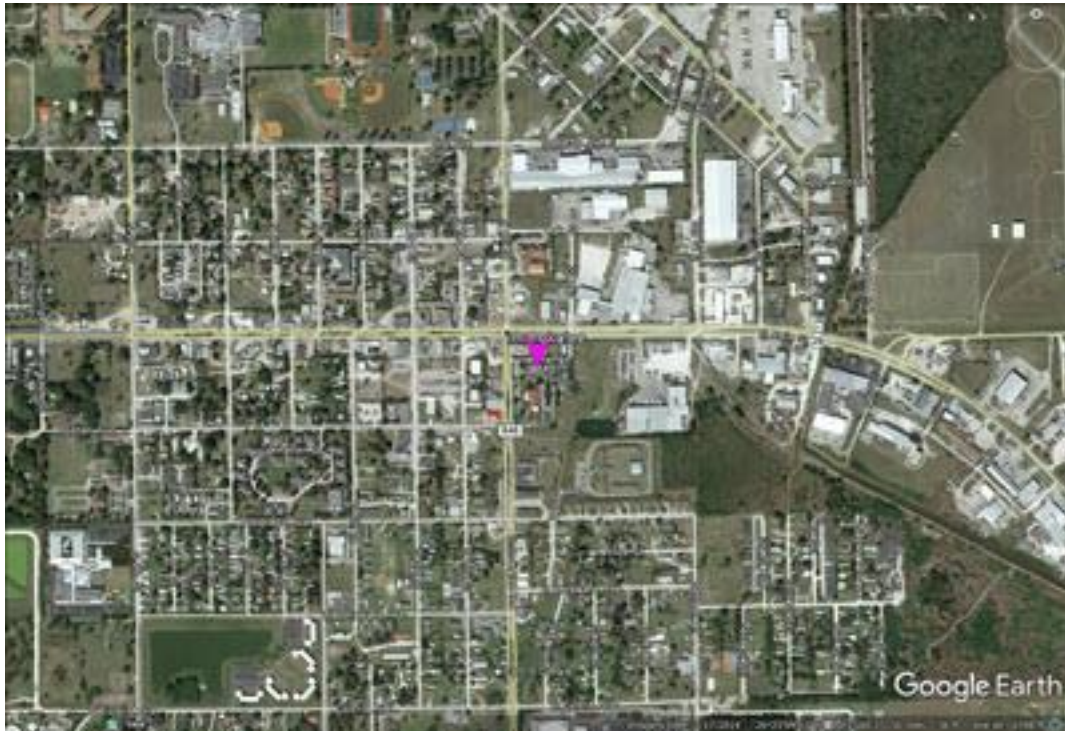
Geodetic Position*	
Latitude	26° 25' 04.24045" N
E Longitude	278° 34' 59.73207" E
W Longitude	81° 25' 00.26793" W
Ellipsoid Height	-9.728 M
Cartesian Coordinates*	
X = 853073.000 M	
Y = -5651850.969 M	
Z = 2820591.576 M	

State Plane Coordinates*	
Zone: -	
N: - M	
E: - M	
UTM Coordinates*	
Zone: -	
N: - M	
E: - M	
UTM Coordinates*	
Zone: 17	
N: 2922026.068 M	
E: 458441.950 M	

FPRN Datasheet  
For  
Immokalee (IMMO)



Image not available



\* Positions and Coordinates were calculated using OPUS Projects software published by National Geodetic Survey (NGS).  
\*\* FPRN18 Orthometric Heights were calculated using Infinity software published by Leica Geosystems.



### NAD 83 (2011) epoch 2010.000

After 9/6/2019

Geodetic Position*	
Latitude	26° 25' 04.22109" N
W Longitude	81° 25' 00.24717" W
Ellipsoid Height	-8.153 M
Cartesian Coordinates*	
X = 853073.819 M	
Y = -5651852.540 M	
Z = 2820591.743 M	

State Plane Coordinates*											
Zone: FL E											
N: 230972.296 M											
E: 158428.339 M				UTM Coordinates*		Zone: 17		N: 2922025.471 M		E: 458442.523 M	
UTM Coordinates*											
Zone: 17											
N: 2922025.471 M											
E: 458442.523 M											

### ITRF 2014 epoch 2019.078

After 9/6/2019

Geodetic Position*	
Latitude	26° 25' 04.24049" N
E Longitude	278° 34' 59.73224" E
W Longitude	81° 25' 00.26776" W
Ellipsoid Height	-9.742 M
Cartesian Coordinates*	
X = 853073.003 M	
Y = -5651850.955 M	
Z = 2820591.570 M	

State Plane Coordinates*																											
Zone: -																											
N: - M																											
E: - M				Zone: -		N: - M		E: - M				Zone: -		N: - M		E: - M				UTM Coordinates*		Zone: 17		N: 2922025.471 M		E: 458442.523 M	
Zone: -																											
N: - M																											
E: - M				Zone: -		N: - M		E: - M				UTM Coordinates*		Zone: 17		N: 2922025.471 M		E: 458442.523 M									
Zone: -																											
N: - M																											
E: - M				UTM Coordinates*		Zone: 17		N: 2922025.471 M		E: 458442.523 M																	
UTM Coordinates*																											
Zone: 17																											
N: 2922025.471 M																											
E: 458442.523 M																											

### NAD 83 (2011) epoch 2010.000

After 8/16/2018

Geodetic Position*	
Latitude	26° 25' 04.22096" N
W. Longitude	81° 25' 00.24695" W
Ellipsoid Height	-8.147 M
Cartesian Coordinates*	
X = 853073.826 M	
Y = -5651852.546 M	
Z = 2820591.742 M	

State Plane Coordinates*											
Zone: FL E											
N: 230972.292 M											
E: 158428.345 M				UTM Coordinates*		Zone: 17		N: 2922025.467 M		E: 458442.529 M	
UTM Coordinates*											
Zone: 17											
N: 2922025.467 M											
E: 458442.529 M											



### NAD 83 (2011) epoch 2010.000

After 8/25/2015

Geodetic Position*	
Latitude	26° 25' 04.22096" N
W. Longitude	81° 25' 00.24695" W
Ellipsoid Height	-8.147 M
Cartesian Coordinates*	
X = 853073.826 M	
Y = -5651852.546 M	
Z = 2820591.742 M	

State Plane Coordinates*	
Zone: FL E	
N: 230972.292 M	
E: 158428.345 M	
UTM Coordinates*	
Zone: 17	
N: 2922025.467 M	
E: 458442.529 M	

### NAD 83 (2011) epoch 2010.000

After 8/2/2014

Geodetic Position*	
Latitude	26° 25' 04.22081" N
W. Longitude	81° 25' 00.24701" W
Ellipsoid Height	-8.201 M
Cartesian Coordinates*	
X = 853073.818 M	
Y = -5651852.500 M	
Z = 2820591.714 M	

State Plane Coordinates*	
Zone: FL E	
N: 230972.287 M	
E: 158428.343 M	
UTM Coordinates*	
Zone: 17	
N: 2922025.462 M	
E: 458442.527 M	

### NAD 83 (CORS96)

Prior to 8/2/2014

Geodetic Position*	
Latitude	26° 25' 04.22121" N
W. Longitude	81° 25' 00.24773" W
Ellipsoid Height	-8.088 M
Cartesian Coordinates*	
X = 853073.812 M	
Y = -5651852.598 M	
Z = 2820591.775 M	

State Plane Coordinates*	
Zone: FL E	
N: 230972.300 M	
E: 158428.323 M	
UTM Coordinates*	
Zone: 17	
N: 2922025.475 M	
E: 458442.508 M	