


FPRN Datasheet

Site Name:	Jacksonville	
Site Code:	JXVL	
RTCM Code:		
Receiver Type:	-	
Serial Number:	0	
Firmware:	-	
Antenna Type:	-	
Serial Number:	-	
Satellite Systems:	-	

NAVD 88 Orthometric Height

Leveled	Geoid 18*	FPRN18**
- M	0.000 M	- M

NAD 83 (2011) epoch 2010.000 Current Broadcast Datum of FPRN

After 1/6/2020

Geodetic Position*	
Latitude	- N
E Longitude	- E
W Longitude	- W
Ellipsoid Height	0.000 M
Cartesian Coordinates*	
X = 0.000 M	
Y = 0.000 M	
Z = 0.000 M	

State Plane Coordinates*	
Zone: FL E	
N: 0.000 M	
E: 0.000 M	
UTM Coordinates*	
Zone: 17	
N: 0.000 M	
E: 0.000 M	

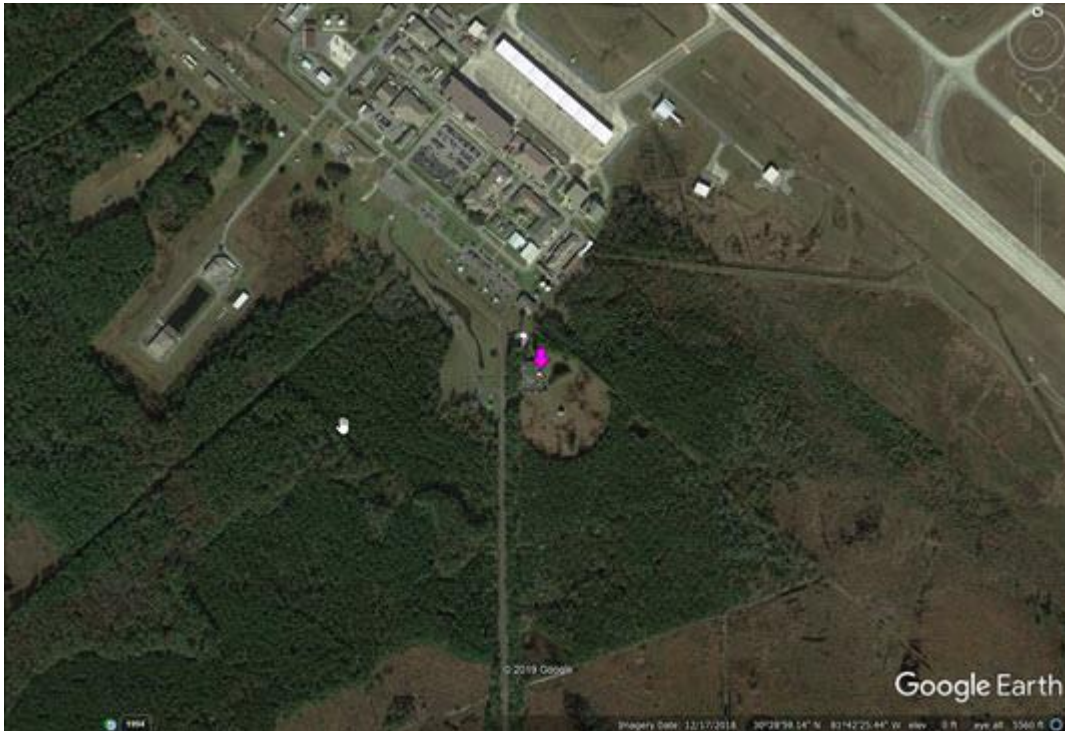
ITRF 2014 epoch 0.000

After 1/6/2020

Geodetic Position*	
Latitude	- N
E Longitude	- E
W Longitude	- W
Ellipsoid Height	0.000 M
Cartesian Coordinates*	
X = 0.000 M	
Y = 0.000 M	
Z = 0.000 M	

State Plane Coordinates*	
Zone: -	
N: - M	
E: - M	
Zone: -	
N: - M	
E: - M	
Zone: -	
N: - M	
E: - M	
UTM Coordinates*	
Zone: 17	
N: 0.000 M	
E: 0.000 M	

**SITE
DECOMMISSIONED
NOT
OPERATIONAL**



* Positions and Coordinates were calculated using OPUS Projects software published by National Geodetic Survey (NGS).
** FPRN18 Orthometric Heights were calculated using Infinity software published by Leica Geosystems.



NAD 83 (2011) epoch 2010.000

After 9/6/2019

Geodetic Position*	
Latitude	- N
W Longitude	- W
Ellipsoid Height	0.000 M
Cartesian Coordinates*	
X = 0.000 M	
Y = 0.000 M	
Z = 0.000 M	

State Plane Coordinates*											
Zone: FL E											
N: 0.000 M											
E: 0.000 M				UTM Coordinates*		Zone: 17		N: 0.000 M		E: 0.000 M	
UTM Coordinates*											
Zone: 17											
N: 0.000 M											
E: 0.000 M											

ITRF 2014 epoch 2019.078

After 9/6/2019

Geodetic Position*	
Latitude	- N
E Longitude	- E
W Longitude	- W
Ellipsoid Height	0.000 M
Cartesian Coordinates*	
X = 0.000 M	
Y = 0.000 M	
Z = 0.000 M	

State Plane Coordinates*																											
Zone: -																											
N: - M																											
E: - M				Zone: -		N: - M		E: - M				Zone: -		N: - M		E: - M				UTM Coordinates*		Zone: 17		N: 0.000 M		E: 0.000 M	
Zone: -																											
N: - M																											
E: - M				Zone: -		N: - M		E: - M				UTM Coordinates*		Zone: 17		N: 0.000 M		E: 0.000 M									
Zone: -																											
N: - M																											
E: - M				UTM Coordinates*		Zone: 17		N: 0.000 M		E: 0.000 M																	
UTM Coordinates*																											
Zone: 17																											
N: 0.000 M																											
E: 0.000 M																											

NAD 83 (2011) epoch 2010.000

After 8/16/2018

Geodetic Position*	
Latitude	- N
W. Longitude	- W
Ellipsoid Height	0.000 M
Cartesian Coordinates*	
X = 0.000 M	
Y = 0.000 M	
Z = 0.000 M	

State Plane Coordinates*											
Zone: FL E											
N: 0.000 M											
E: 0.000 M				UTM Coordinates*		Zone: 17		N: 0.000 M		E: 0.000 M	
UTM Coordinates*											
Zone: 17											
N: 0.000 M											
E: 0.000 M											



NAD 83 (2011) epoch 2010.000

After 8/25/2015

Geodetic Position*	
Latitude	- N
W. Longitude	- W
Ellipsoid Height	0.000 M
Cartesian Coordinates*	
X = 0.000 M	
Y = 0.000 M	
Z = 0.000 M	

State Plane Coordinates*	
Zone: FL E	
N: 0.000 M	
E: 0.000 M	
UTM Coordinates*	
Zone: 17	
N: 0.000 M	
E: 0.000 M	

NAD 83 (2011) epoch 2010.000

After 8/2/2014

Geodetic Position*	
Latitude	30° 29' 02.51500" N
W. Longitude	81° 42' 05.32943" W
Ellipsoid Height	-17.719 M
Cartesian Coordinates*	
X = 793994.042 M	
Y = -5443615.967 M	
Z = 3216720.149 M	

State Plane Coordinates*	
Zone: FL E	
N: 681731.702 M	
E: 132650.776 M	
UTM Coordinates*	
Zone: 17	
N: 3372631.079 M	
E: 432673.755 M	

NAD 83 (CORS96)

Prior to 8/2/2014

Geodetic Position*	
Latitude	30° 29' 02.51505" N
W. Longitude	81° 42' 05.33022" W
Ellipsoid Height	-17.725 M
Cartesian Coordinates*	
X = 793994.021 M	
Y = -5443615.964 M	
Z = 3216720.147 M	

State Plane Coordinates*	
Zone: FL E	
N: 681731.703 M	
E: 132650.755 M	
UTM Coordinates*	
Zone: 17	
N: 3372631.081 M	
E: 432673.734 M	