


FPRN Datasheet

Site Name:	La Belle	 <p>FDOT Florida Permanent Reference Network</p>
Site Code:	LBLL	
RTCM Code:	0105	
Receiver Type:	LEICA GR30	
Serial Number:	1701999	
Firmware:	4.30	
Antenna Type:	LEIAR20 NONE	
Serial Number:	16330006	
Satellite Systems:	G/R/E/-/-	

NAVD 88 Orthometric Height

Leveled	Geoid 18*	FPRN18**
- M	7.873 M	7.874 M

NAD 83 (2011) epoch 2010.000 Current Broadcast Datum of FPRN

After 1/6/2020

Geodetic Position*	
Latitude	26°44'51.32448" N
E Longitude	278°32'47.70901" E
W Longitude	81°27'12.29099" W
Ellipsoid Height	-16.601 M
Cartesian Coordinates*	
X = 847024.690 M	
Y = -5636222.418 M	
Z = 2853261.081 M	

State Plane Coordinates*	
Zone: FL E	
N: 267518.612 M	
E: 154898.755 M	
UTM Coordinates*	
Zone: 17	
N: 2958559.318 M	
E: 454914.143 M	

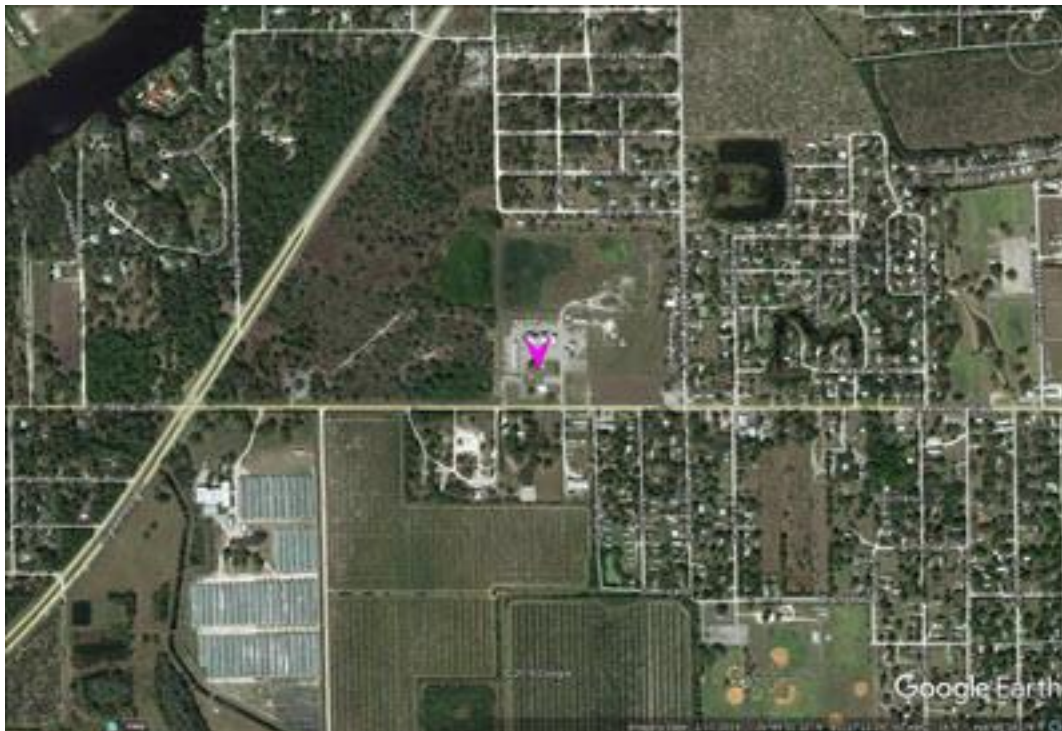
ITRF 2014 epoch 2019.836

After 1/6/2020

Geodetic Position*	
Latitude	26° 44' 51.34417" N
E Longitude	278° 32' 47.68806" E
W Longitude	81° 27' 12.31194" W
Ellipsoid Height	-18.183 M
Cartesian Coordinates*	
X = 847023.867 M	
Y = -5636220.838 M	
Z = 2853260.910 M	

State Plane Coordinates*	
Zone: -	
N: - M	
E: - M	
UTM Coordinates*	
Zone: -	
N: - M	
E: - M	
UTM Coordinates*	
Zone: 17	
N: 2958559.925 M	
E: 454913.567 M	

FPRN Datasheet
For
La Belle (LBLL)



* Positions and Coordinates were calculated using OPUS Projects software published by National Geodetic Survey (NGS).
** FPRN18 Orthometric Heights were calculated using Infinity software published by Leica Geosystems.



NAD 83 (2011) epoch 2010.000

After 9/6/2019

Geodetic Position*	
Latitude	26° 44' 51.32428" N
W Longitude	81° 27' 12.29040" W
Ellipsoid Height	-16.613 M
Cartesian Coordinates*	
X = 847024.705 M	
Y = -5636222.408 M	
Z = 2853261.070 M	

State Plane Coordinates*	
Zone: FL E	
N: 267518.606 M	
E: 154898.771 M	
UTM Coordinates*	
Zone: 17	
N: 2958559.311 M	
E: 454914.159 M	

ITRF 2014 epoch 2019.078

After 9/6/2019

Geodetic Position*	
Latitude	26° 44' 51.34416" N
E Longitude	278° 32' 47.68849" E
W Longitude	81° 27' 12.31151" W
Ellipsoid Height	-18.189 M
Cartesian Coordinates*	
X = 847023.878 M	
Y = -5636220.831 M	
Z = 2853260.907 M	

State Plane Coordinates*	
Zone: -	
N: - M	
E: - M	
Zone: -	
N: - M	
E: - M	
Zone: -	
N: - M	
E: - M	
UTM Coordinates*	
Zone: 17	
N: 2958559.925 M	
E: 454913.578 M	

NAD 83 (2011) epoch 2010.000

After 8/16/2018

Geodetic Position*	
Latitude	26° 44' 51.32418" N
W. Longitude	81° 27' 12.29049" W
Ellipsoid Height	-16.588 M
Cartesian Coordinates*	
X = 847024.706 M	
Y = -5636222.432 M	
Z = 2853261.079 M	

State Plane Coordinates*	
Zone: FL E	
N: 267518.603 M	
E: 154898.768 M	
UTM Coordinates*	
Zone: 17	
N: 2958559.308 M	
E: 454914.157 M	



NAD 83 (2011) epoch 2010.000

After 8/25/2015

Geodetic Position*	
Latitude	26° 44' 51.32418" N
W. Longitude	81° 27' 12.29049" W
Ellipsoid Height	-16.588 M
Cartesian Coordinates*	
X = 847024.706 M	
Y = -5636222.432 M	
Z = 2853261.079 M	

State Plane Coordinates*	
Zone: FL E	
N: 267518.603 M	
E: 154898.768 M	
UTM Coordinates*	
Zone: 17	
N: 2958559.308 M	
E: 454914.157 M	

NAD 83 (2011) epoch 2010.000

After 8/2/2014

Geodetic Position*	
Latitude	26° 44' 51.32412" N
W. Longitude	81° 27' 12.29045" W
Ellipsoid Height	-16.588 M
Cartesian Coordinates*	
X = 847024.707 M	
Y = -5636222.433 M	
Z = 2853261.077 M	

State Plane Coordinates*	
Zone: FL E	
N: 267518.601 M	
E: 154898.770 M	
UTM Coordinates*	
Zone: 17	
N: 2958559.306 M	
E: 454914.158 M	

NAD 83 (CORS96)

Prior to 8/2/2014

Geodetic Position*	
Latitude	26° 44' 51.32474" N
W. Longitude	81° 27' 12.29099" W
Ellipsoid Height	-16.576 M
Cartesian Coordinates*	
X = 847024.693 M	
Y = -5636222.437 M	
Z = 2853261.100 M	

State Plane Coordinates*	
Zone: FL E	
N: 267518.620 M	
E: 154898.755 M	
UTM Coordinates*	
Zone: 17	
N: 2958559.326 M	
E: 454914.143 M	