


## FPRN Datasheet

Site Name:	Indiantown	
Site Code:	MRT1	
RTCM Code:		
Receiver Type:	-	
Serial Number:	0	
Firmware:	-	
Antenna Type:	-	
Serial Number:	-	
Satellite Systems:	-	

### NAVD 88 Orthometric Height

<b>Leveled</b>	<b>Geoid 18*</b>	<b>FPRN18**</b>
- M	0.000 M	- M

### NAD 83 (2011) epoch 2010.000 Current Broadcast Datum of FPRN

After 1/6/2020

Geodetic Position*	
Latitude	- N
E Longitude	- E
W Longitude	- W
Ellipsoid Height	0.000 M
Cartesian Coordinates*	
X = 0.000 M	
Y = 0.000 M	
Z = 0.000 M	

State Plane Coordinates*	
Zone: FL E	
N: 0.000 M	
E: 0.000 M	
UTM Coordinates*	
Zone: 17	
N: 0.000 M	
E: 0.000 M	

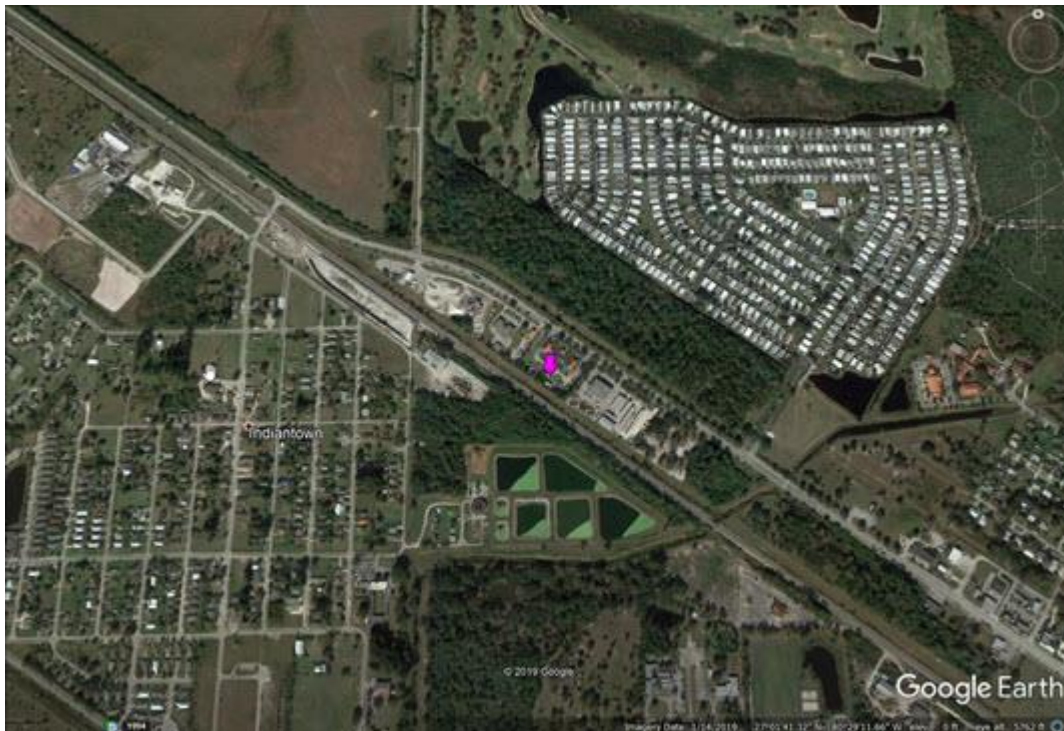
### ITRF 2014 epoch 0.000

After 1/6/2020

Geodetic Position*	
Latitude	- N
E Longitude	- E
W Longitude	- W
Ellipsoid Height	0.000 M
Cartesian Coordinates*	
X = 0.000 M	
Y = 0.000 M	
Z = 0.000 M	

State Plane Coordinates*	
Zone: -	
N: - M	
E: - M	
UTM Coordinates*	
Zone: -	
N: - M	
E: - M	

**SITE  
DECOMMISSIONED  
NOT  
OPERATIONAL**



\* Positions and Coordinates were calculated using OPUS Projects software published by National Geodetic Survey (NGS).  
\*\* FPRN18 Orthometric Heights were calculated using Infinity software published by Leica Geosystems.



### NAD 83 (2011) epoch 2010.000

After 9/6/2019

Geodetic Position*	
Latitude	- N
W Longitude	- W
Ellipsoid Height	0.000 M
Cartesian Coordinates*	
X = 0.000 M	
Y = 0.000 M	
Z = 0.000 M	

State Plane Coordinates*											
Zone: FL E											
N: 0.000 M											
E: 0.000 M				UTM Coordinates*		Zone: 17		N: 0.000 M		E: 0.000 M	
UTM Coordinates*											
Zone: 17											
N: 0.000 M											
E: 0.000 M											

### ITRF 2014 epoch 2019.078

After 9/6/2019

Geodetic Position*	
Latitude	- N
E Longitude	- E
W Longitude	- W
Ellipsoid Height	0.000 M
Cartesian Coordinates*	
X = 0.000 M	
Y = 0.000 M	
Z = 0.000 M	

State Plane Coordinates*																											
Zone: -																											
N: - M																											
E: - M				Zone: -		N: - M		E: - M				Zone: -		N: - M		E: - M				UTM Coordinates*		Zone: 17		N: 0.000 M		E: 0.000 M	
Zone: -																											
N: - M																											
E: - M				Zone: -		N: - M		E: - M				UTM Coordinates*		Zone: 17		N: 0.000 M		E: 0.000 M									
Zone: -																											
N: - M																											
E: - M				UTM Coordinates*		Zone: 17		N: 0.000 M		E: 0.000 M																	
UTM Coordinates*																											
Zone: 17																											
N: 0.000 M																											
E: 0.000 M																											

### NAD 83 (2011) epoch 2010.000

After 8/16/2018

Geodetic Position*	
Latitude	- N
W. Longitude	- W
Ellipsoid Height	0.000 M
Cartesian Coordinates*	
X = 0.000 M	
Y = 0.000 M	
Z = 0.000 M	

State Plane Coordinates*											
Zone: FL E											
N: 0.000 M											
E: 0.000 M				UTM Coordinates*		Zone: 17		N: 0.000 M		E: 0.000 M	
UTM Coordinates*											
Zone: 17											
N: 0.000 M											
E: 0.000 M											



### NAD 83 (2011) epoch 2010.000

After 8/25/2015

Geodetic Position*	
Latitude	- N
W. Longitude	- W
Ellipsoid Height	0.000 M
Cartesian Coordinates*	
X = 0.000 M	
Y = 0.000 M	
Z = 0.000 M	

State Plane Coordinates*	
Zone: FL E	
N: 0.000 M	
E: 0.000 M	
UTM Coordinates*	
Zone: 17	
N: 0.000 M	
E: 0.000 M	

### NAD 83 (2011) epoch 2010.000

After 8/2/2014

Geodetic Position*	
Latitude	27° 01' 41.42915" N
W. Longitude	80° 28' 46.75955" W
Ellipsoid Height	0.753 M
Cartesian Coordinates*	
X = 940364.095 M	
Y = -5607162.656 M	
Z = 2880997.176 M	

State Plane Coordinates*	
Zone: FL E	
N: 298632.280 M	
E: 251631.248 M	
UTM Coordinates*	
Zone: 17	
N: 2989662.370 M	
E: 551613.631 M	

### NAD 83 (CORS96)

Prior to 8/2/2014

Geodetic Position*	
Latitude	27° 01' 41.42953" N
W. Longitude	80° 28' 46.76014" W
Ellipsoid Height	0.796 M
Cartesian Coordinates*	
X = 940364.084 M	
Y = -5607162.691 M	
Z = 2880997.206 M	

State Plane Coordinates*	
Zone: FL E	
N: 298632.292 M	
E: 251631.231 M	
UTM Coordinates*	
Zone: 17	
N: 2989662.381 M	
E: 551613.615 M	