


FPRN Datasheet

Site Name:	Hobe Sound	
Site Code:	MRT3	
RTCM Code:		
Receiver Type:	-	
Serial Number:	0	
Firmware:	-	
Antenna Type:	-	
Serial Number:	-	
Satellite Systems:	-	

NAVD 88 Orthometric Height

Leveled	Geoid 18*	FPRN18**
- M	0.000 M	- M

NAD 83 (2011) epoch 2010.000 Current Broadcast Datum of FPRN

After 1/6/2020

Geodetic Position*	
Latitude	- N
E Longitude	- E
W Longitude	- W
Ellipsoid Height	0.000 M
Cartesian Coordinates*	
X = 0.000 M	
Y = 0.000 M	
Z = 0.000 M	

State Plane Coordinates*	
Zone: FL E	
N: 0.000 M	
E: 0.000 M	
UTM Coordinates*	
Zone: 17	
N: 0.000 M	
E: 0.000 M	

ITRF 2014 epoch 0.000

After 1/6/2020

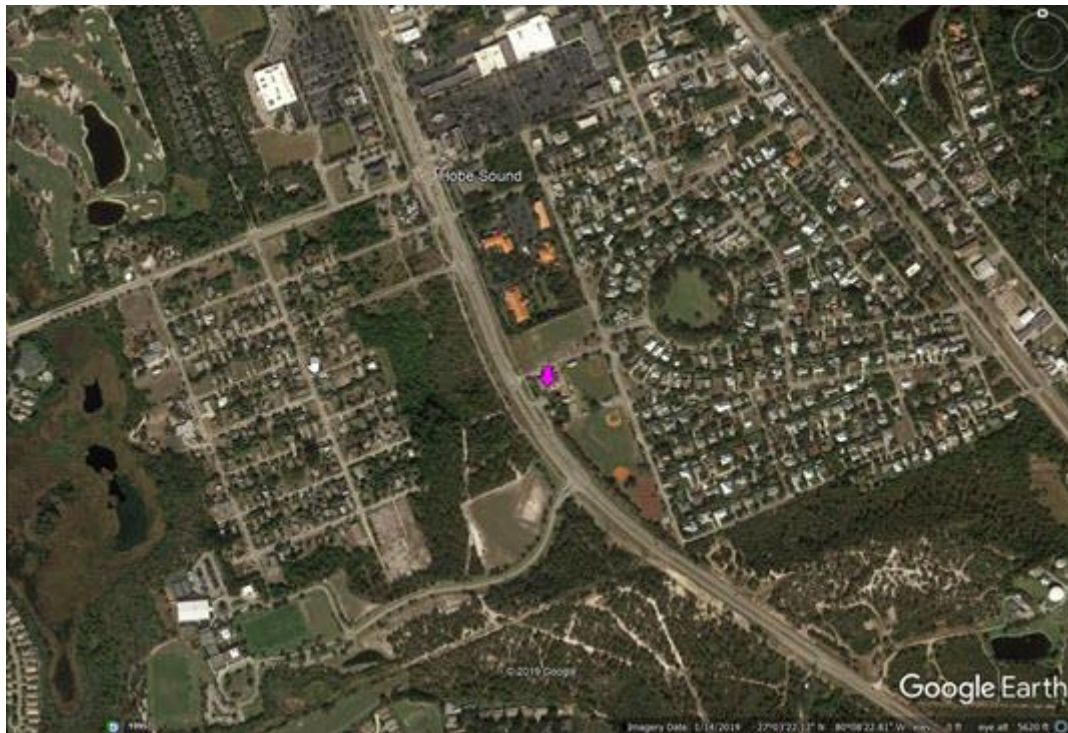
Geodetic Position*	
Latitude	- N
E Longitude	- E
W Longitude	- W
Ellipsoid Height	0.000 M
Cartesian Coordinates*	
X = 0.000 M	
Y = 0.000 M	
Z = 0.000 M	

State Plane Coordinates*	
Zone: -	
N: - M	
E: - M	
UTM Coordinates*	
Zone: -	
N: - M	
E: - M	
UTM Coordinates*	
Zone: 17	
N: 0.000 M	
E: 0.000 M	

FPRN Datasheet
For
Hobe Sound (MRT3)



**SITE
DECOMMISSIONED
NOT
OPERATIONAL**



* Positions and Coordinates were calculated using OPUS Projects software published by National Geodetic Survey (NGS).
** FPRN18 Orthometric Heights were calculated using Infinity software published by Leica Geosystems.



NAD 83 (2011) epoch 2010.000

After 9/6/2019

Geodetic Position*	
Latitude	- N
W Longitude	- W
Ellipsoid Height	0.000 M
Cartesian Coordinates*	
X = 0.000 M	
Y = 0.000 M	
Z = 0.000 M	

State Plane Coordinates*											
Zone: FL E											
N: 0.000 M											
E: 0.000 M				UTM Coordinates*		Zone: 17		N: 0.000 M		E: 0.000 M	
UTM Coordinates*											
Zone: 17											
N: 0.000 M											
E: 0.000 M											

ITRF 2014 epoch 2019.078

After 9/6/2019

Geodetic Position*	
Latitude	- N
E Longitude	- E
W Longitude	- W
Ellipsoid Height	0.000 M
Cartesian Coordinates*	
X = 0.000 M	
Y = 0.000 M	
Z = 0.000 M	

State Plane Coordinates*																											
Zone: -																											
N: - M																											
E: - M				Zone: -		N: - M		E: - M				Zone: -		N: - M		E: - M				UTM Coordinates*		Zone: 17		N: 0.000 M		E: 0.000 M	
Zone: -																											
N: - M																											
E: - M				Zone: -		N: - M		E: - M				UTM Coordinates*		Zone: 17		N: 0.000 M		E: 0.000 M									
Zone: -																											
N: - M																											
E: - M				UTM Coordinates*		Zone: 17		N: 0.000 M		E: 0.000 M																	
UTM Coordinates*																											
Zone: 17																											
N: 0.000 M																											
E: 0.000 M																											

NAD 83 (2011) epoch 2010.000

After 8/16/2018

Geodetic Position*	
Latitude	- N
W. Longitude	- W
Ellipsoid Height	0.000 M
Cartesian Coordinates*	
X = 0.000 M	
Y = 0.000 M	
Z = 0.000 M	

State Plane Coordinates*											
Zone: FL E											
N: 0.000 M											
E: 0.000 M				UTM Coordinates*		Zone: 17		N: 0.000 M		E: 0.000 M	
UTM Coordinates*											
Zone: 17											
N: 0.000 M											
E: 0.000 M											



NAD 83 (2011) epoch 2010.000

After 8/25/2015

Geodetic Position*	
Latitude	- N
W. Longitude	- W
Ellipsoid Height	0.000 M
Cartesian Coordinates*	
X = 0.000 M	
Y = 0.000 M	
Z = 0.000 M	

State Plane Coordinates*									
Zone: FL E									
N: 0.000 M									
E: 0.000 M		UTM Coordinates*		Zone: 17		N: 0.000 M		E: 0.000 M	
UTM Coordinates*									
Zone: 17									
N: 0.000 M									
E: 0.000 M									

NAD 83 (2011) epoch 2010.000

After 8/2/2014

Geodetic Position*	
Latitude	27° 03' 21.25341" N
W. Longitude	80° 08' 03.89169" W
Ellipsoid Height	-11.981 M
Cartesian Coordinates*	
X = 973892.019 M	
Y = -5600007.243 M	
Z = 2883727.964 M	

State Plane Coordinates*									
Zone: FL E									
N: 301893.086 M									
E: 285867.960 M		UTM Coordinates*		Zone: 17		N: 2992922.063 M		E: 585838.662 M	
UTM Coordinates*									
Zone: 17									
N: 2992922.063 M									
E: 585838.662 M									

NAD 83 (CORS96)

After 8/2/2014

Geodetic Position*	
Latitude	- N
W. Longitude	- W
Ellipsoid Height	0.000 M
Cartesian Coordinates*	
X = 0.000 M	
Y = 0.000 M	
Z = 0.000 M	

State Plane Coordinates*									
Zone: FL E									
N: 0.000 M									
E: 0.000 M		UTM Coordinates*		Zone: 17		N: 0.000 M		E: 0.000 M	
UTM Coordinates*									
Zone: 17									
N: 0.000 M									
E: 0.000 M									