


FPRN Datasheet

| | | |
|--------------------|--------------|---|
| Site Name: | Panama City |  <p>FDOT Florida Permanent Reference Network</p> |
| Site Code: | PNMA | |
| RTCM Code: | 0310 | |
| Receiver Type: | LEICA GR30 | |
| Serial Number: | 1701742 | |
| Firmware: | 4.30 | |
| Antenna Type: | LEIAR20 NONE | |
| Serial Number: | 16226007 | |
| Satellite Systems: | G/R/E/-/- | |

NAVD 88 Orthometric Height

| | | |
|----------------|------------------|-----------------|
| Leveled | Geoid 18* | FPRN18** |
| - M | 12.764 M | 12.763 M |

NAD 83 (2011) epoch 2010.000 Current Broadcast Datum of FPRN

After 1/6/2020

| Geodetic Position* | |
|------------------------|--------------------|
| Latitude | 30°12'51.74031" N |
| E Longitude | 274°19'37.12703" E |
| W Longitude | 85°40'22.87297" W |
| Ellipsoid Height | -15.022 M |
| Cartesian Coordinates* | |
| X = 416197.083 M | |
| Y = -5500600.060 M | |
| Z = 3190924.198 M | |

| State Plane Coordinates* | |
|--------------------------|--|
| Zone: FL N | |
| N: 135191.017 M | |
| E: 487071.465 M | |
| UTM Coordinates* | |
| Zone: 16 | |
| N: 3343284.268 M | |
| E: 627713.831 M | |

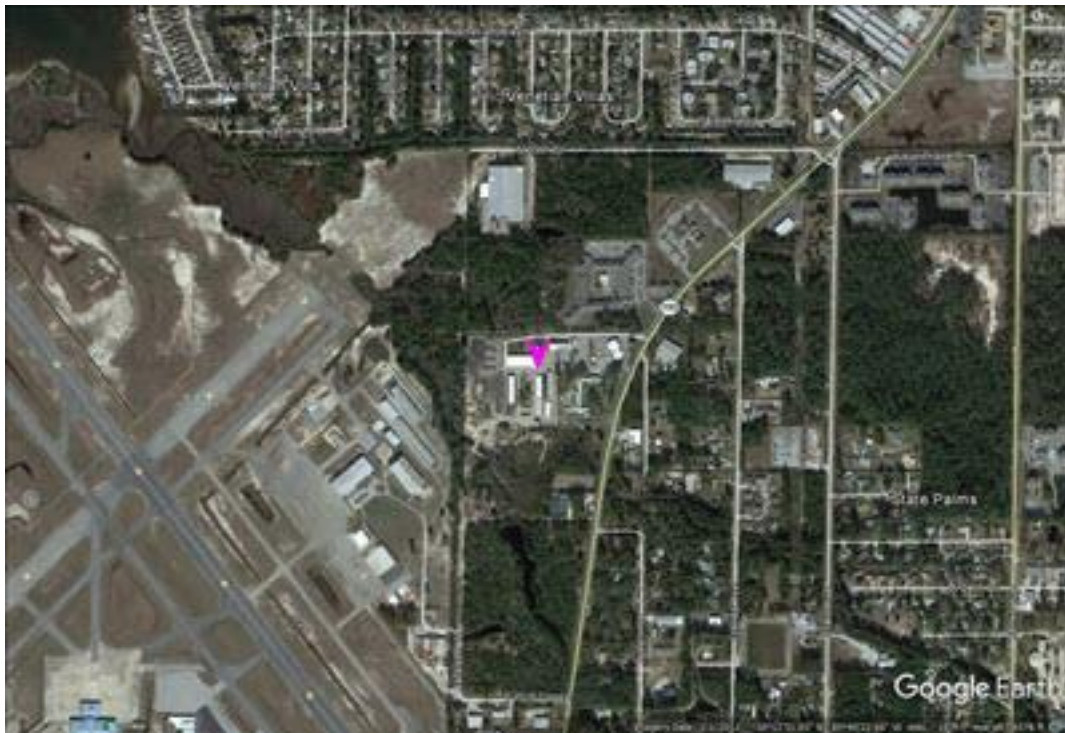
ITRF 2014 epoch 2019.837

After 1/6/2020

| Geodetic Position* | |
|------------------------|----------------------|
| Latitude | 30° 12' 51.76137" N |
| E Longitude | 274° 19' 37.09995" E |
| W Longitude | 85° 40' 22.90005" W |
| Ellipsoid Height | -16.464 M |
| Cartesian Coordinates* | |
| X = 416196.242 M | |
| Y = -5500598.547 M | |
| Z = 3190924.033 M | |

| State Plane Coordinates* | |
|--------------------------|--|
| Zone: - | |
| N: - M | |
| E: - M | |
| UTM Coordinates* | |
| Zone: - | |
| N: - M | |
| E: - M | |
| UTM Coordinates* | |
| Zone: 16 | |
| N: 3343284.908 M | |
| E: 627713.099 M | |

FPRN Datasheet
For
Panama City (PNMA)



* Positions and Coordinates were calculated using OPUS Projects software published by National Geodetic Survey (NGS).
** FPRN18 Orthometric Heights were calculated using Infinity software published by Leica Geosystems.



NAD 83 (2011) epoch 2010.000

After 9/6/2019

| Geodetic Position* | |
|------------------------|---------------------|
| Latitude | 30° 12' 51.74025" N |
| W Longitude | 85° 40' 22.87246" W |
| Ellipsoid Height | -14.998 M |
| Cartesian Coordinates* | |
| X = 416197.098 M | |
| Y = -5500600.080 M | |
| Z = 3190924.208 M | |

| State Plane Coordinates* | |
|--------------------------|--|
| Zone: FL N | |
| N: 135191.015 M | |
| E: 487071.479 M | |
| UTM Coordinates* | |
| Zone: 16 | |
| N: 3343284.266 M | |
| E: 627713.844 M | |

ITRF 2014 epoch 2019.078

After 9/6/2019

| Geodetic Position* | |
|------------------------|----------------------|
| Latitude | 30° 12' 51.76144" N |
| E Longitude | 274° 19' 37.10024" E |
| W Longitude | 85° 40' 22.89976" W |
| Ellipsoid Height | -16.436 M |
| Cartesian Coordinates* | |
| X = 416196.252 M | |
| Y = -5500598.569 M | |
| Z = 3190924.048 M | |

| State Plane Coordinates* | |
|--------------------------|--|
| Zone: - | |
| N: - M | |
| E: - M | |
| Zone: - | |
| N: - M | |
| E: - M | |
| Zone: - | |
| N: - M | |
| E: - M | |
| UTM Coordinates* | |
| Zone: 16 | |
| N: 3343284.910 M | |
| E: 627713.107 M | |

NAD 83 (2011) epoch 2010.000

After 8/16/2018

| Geodetic Position* | |
|------------------------|---------------------|
| Latitude | 30° 12' 51.74039" N |
| W. Longitude | 85° 40' 22.87302" W |
| Ellipsoid Height | -15.011 M |
| Cartesian Coordinates* | |
| X = 416197.082 M | |
| Y = -5500600.068 M | |
| Z = 3190924.206 M | |

| State Plane Coordinates* | |
|--------------------------|--|
| Zone: FL N | |
| N: 135191.019 M | |
| E: 487071.464 M | |
| UTM Coordinates* | |
| Zone: 16 | |
| N: 3343284.270 M | |
| E: 627713.829 M | |



NAD 83 (2011) epoch 2010.000

After 8/25/2015

| Geodetic Position* | |
|------------------------|---------------------|
| Latitude | 30° 12' 51.74039" N |
| W. Longitude | 85° 40' 22.87302" W |
| Ellipsoid Height | -15.011 M |
| Cartesian Coordinates* | |
| X = 416197.082 M | |
| Y = -5500600.068 M | |
| Z = 3190924.206 M | |

| State Plane Coordinates* | | | | | | | | | |
|--------------------------|--|------------------|--|----------|--|------------------|--|-----------------|--|
| Zone: FL N | | | | | | | | | |
| N: 135191.019 M | | | | | | | | | |
| E: 487071.464 M | | UTM Coordinates* | | Zone: 16 | | N: 3343284.270 M | | E: 627713.829 M | |
| UTM Coordinates* | | | | | | | | | |
| Zone: 16 | | | | | | | | | |
| N: 3343284.270 M | | | | | | | | | |
| E: 627713.829 M | | | | | | | | | |

NAD 83 (2011) epoch 2010.000

After 8/2/2014

| Geodetic Position* | |
|------------------------|---------------------|
| Latitude | 30° 12' 51.74012" N |
| W. Longitude | 85° 40' 22.87290" W |
| Ellipsoid Height | -15.011 M |
| Cartesian Coordinates* | |
| X = 416197.086 M | |
| Y = -5500600.072 M | |
| Z = 3190924.198 M | |

| State Plane Coordinates* | | | | | | | | | |
|--------------------------|--|------------------|--|----------|--|------------------|--|-----------------|--|
| Zone: FL N | | | | | | | | | |
| N: 135191.011 M | | | | | | | | | |
| E: 487071.467 M | | UTM Coordinates* | | Zone: 16 | | N: 3343284.262 M | | E: 627713.832 M | |
| UTM Coordinates* | | | | | | | | | |
| Zone: 16 | | | | | | | | | |
| N: 3343284.262 M | | | | | | | | | |
| E: 627713.832 M | | | | | | | | | |

NAD 83 (CORS96)

Prior to 8/2/2014

| Geodetic Position* | |
|------------------------|---------------------|
| Latitude | 30° 12' 51.74067" N |
| W. Longitude | 85° 40' 22.87323" W |
| Ellipsoid Height | -15.019 M |
| Cartesian Coordinates* | |
| X = 416197.076 M | |
| Y = -5500600.057 M | |
| Z = 3190924.209 M | |

| State Plane Coordinates* | | | | | | | | | |
|--------------------------|--|------------------|--|----------|--|------------------|--|-----------------|--|
| Zone: FL N | | | | | | | | | |
| N: 135191.028 M | | | | | | | | | |
| E: 487071.458 M | | UTM Coordinates* | | Zone: 16 | | N: 3343284.279 M | | E: 627713.823 M | |
| UTM Coordinates* | | | | | | | | | |
| Zone: 16 | | | | | | | | | |
| N: 3343284.279 M | | | | | | | | | |
| E: 627713.823 M | | | | | | | | | |