


FPRN Datasheet

Site Name:	Sebastian		
Site Code:	SBST		
RTCM Code:	0406		
Receiver Type:	LEICA GR30		
Serial Number:	1702058		
Firmware:	4.30		
Antenna Type:	LEIAR20	NONE	
Serial Number:	16275003		
Satellite Systems:	G/R/E/-/-		

NAVD 88 Orthometric Height

Leveled	Geoid 18*	FPRN18**
- M	7.984 M	7.986 M

NAD 83 (2011) epoch 2010.000 Current Broadcast Datum of FPRN

After 1/6/2020

Geodetic Position*	
Latitude	27°48'47.44457" N
E Longitude	279°30'33.03067" E
W Longitude	80°29'26.96933" W
Ellipsoid Height	-19.916 M
Cartesian Coordinates*	
X = 932650.059 M	
Y = -5567819.553 M	
Z = 2958200.406 M	

State Plane Coordinates*	
Zone: FL E	
N: 385611.099 M	
E: 250166.957 M	
UTM Coordinates*	
Zone: 17	
N: 3076611.512 M	
E: 550149.840 M	

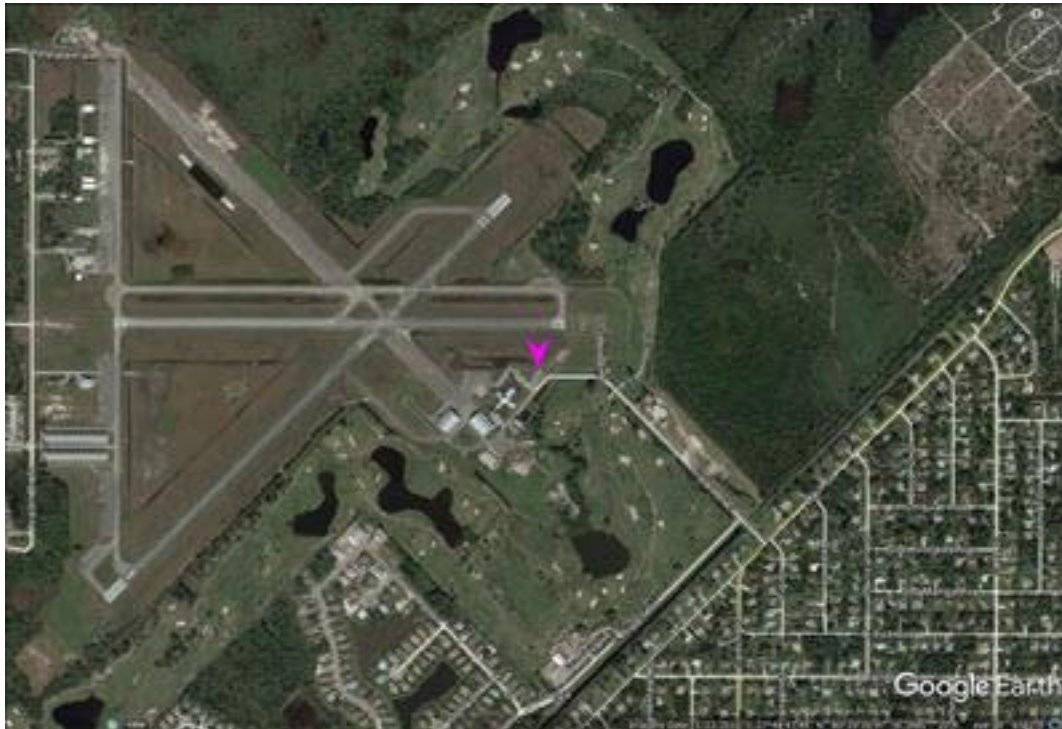
ITRF 2014 epoch 2019.836

After 1/6/2020

Geodetic Position*	
Latitude	27° 48' 47.46558" N
E Longitude	279° 30' 33.01009" E
W Longitude	80° 29' 26.98991" W
Ellipsoid Height	-21.480 M
Cartesian Coordinates*	
X = 932649.225 M	
Y = -5567817.984 M	
Z = 2958200.249 M	

State Plane Coordinates*	
Zone: -	
N: - M	
E: - M	
UTM Coordinates*	
Zone: -	
N: - M	
E: - M	
UTM Coordinates*	
Zone: 17	
N: 3076612.156 M	
E: 550149.275 M	

FPRN Datasheet
For
Sebastian (SBST)



* Positions and Coordinates were calculated using OPUS Projects software published by National Geodetic Survey (NGS).
** FPRN18 Orthometric Heights were calculated using Infinity software published by Leica Geosystems.



NAD 83 (2011) epoch 2010.000

After 9/6/2019

Geodetic Position*	
Latitude	27° 48' 47.44424" N
W Longitude	80° 29' 26.96894" W
Ellipsoid Height	-19.919 M
Cartesian Coordinates*	
X = 932650.070 M	
Y = -5567819.554 M	
Z = 2958200.396 M	

State Plane Coordinates*	
Zone: FL E	
N: 385611.089 M	
E: 250166.968 M	
UTM Coordinates*	
Zone: 17	
N: 3076611.502 M	
E: 550149.851 M	

ITRF 2014 epoch 2019.078

After 9/6/2019

Geodetic Position*	
Latitude	27° 48' 47.46545" N
E Longitude	279° 30' 33.01046" E
W Longitude	80° 29' 26.98954" W
Ellipsoid Height	-21.478 M
Cartesian Coordinates*	
X = 932649.236 M	
Y = -5567817.986 M	
Z = 2958200.246 M	

State Plane Coordinates*	
Zone: -	
N: - M	
E: - M	
Zone: -	
N: - M	
E: - M	
Zone: -	
N: - M	
E: - M	
UTM Coordinates*	
Zone: 17	
N: 3076612.152 M	
E: 550149.285 M	

NAD 83 (2011) epoch 2010.000

After 8/16/2018

Geodetic Position*	
Latitude	27° 48' 47.44433" N
W. Longitude	80° 29' 26.96922" W
Ellipsoid Height	-19.905 M
Cartesian Coordinates*	
X = 932650.064 M	
Y = -5567819.566 M	
Z = 2958200.405 M	

State Plane Coordinates*	
Zone: FL E	
N: 385611.092 M	
E: 250166.960 M	
UTM Coordinates*	
Zone: 17	
N: 3076611.505 M	
E: 550149.843 M	



NAD 83 (2011) epoch 2010.000

After 8/25/2015

Geodetic Position*	
Latitude	27° 48' 47.44433" N
W. Longitude	80° 29' 26.96922" W
Ellipsoid Height	-19.905 M
Cartesian Coordinates*	
X = 932650.064 M	
Y = -5567819.566 M	
Z = 2958200.405 M	

State Plane Coordinates*									
Zone: FL E									
N: 385611.092 M									
E: 250166.960 M		UTM Coordinates*		Zone: 17		N: 3076611.505 M		E: 550149.843 M	
UTM Coordinates*									
Zone: 17									
N: 3076611.505 M									
E: 550149.843 M									

NAD 83 (2011) epoch 2010.000

After 8/2/2014

Geodetic Position*	
Latitude	27° 48' 47.44413" N
W. Longitude	80° 29' 26.96965" W
Ellipsoid Height	-19.905 M
Cartesian Coordinates*	
X = 932650.053 M	
Y = -5567819.571 M	
Z = 2958200.399 M	

State Plane Coordinates*									
Zone: FL E									
N: 385611.086 M									
E: 250166.948 M		UTM Coordinates*		Zone: 17		N: 3076611.499 M		E: 550149.832 M	
UTM Coordinates*									
Zone: 17									
N: 3076611.499 M									
E: 550149.832 M									

NAD 83 (CORS96)

Prior to 8/2/2014

Geodetic Position*	
Latitude	27° 48' 47.44436" N
W. Longitude	80° 29' 26.97015" W
Ellipsoid Height	-19.908 M
Cartesian Coordinates*	
X = 932650.039 M	
Y = -5567819.567 M	
Z = 2958200.404 M	

State Plane Coordinates*									
Zone: FL E									
N: 385611.093 M									
E: 250166.935 M		UTM Coordinates*		Zone: 17		N: 3076611.506 M		E: 550149.818 M	
UTM Coordinates*									
Zone: 17									
N: 3076611.506 M									
E: 550149.818 M									