


FPRN Datasheet

Site Name:	Stuart		
Site Code:	STEW		
RTCM Code:	0407		
Receiver Type:	LEICA GR30		
Serial Number:	1701989		
Firmware:	4.30		
Antenna Type:	LEIAR20	NONE	
Serial Number:	16034014		
Satellite Systems:	G/R/E/-/-		

NAVD 88 Orthometric Height

Leveled	Geoid 18*	FPRN18**
- M	6.556 M	6.555 M

NAD 83 (2011) epoch 2010.000 Current Broadcast Datum of FPRN

After 1/6/2020

Geodetic Position*	
Latitude	27°11'12.71130" N
E Longitude	279°46'37.75796" E
W Longitude	80°13'22.24204" W
Ellipsoid Height	-21.025 M
Cartesian Coordinates*	
X = 964123.027 M	
Y = -5594976.556 M	
Z = 2896639.337 M	

State Plane Coordinates*	
Zone: FL E	
N: 316346.947 M	
E: 277005.379 M	
UTM Coordinates*	
Zone: 17	
N: 3007370.992 M	
E: 576979.105 M	

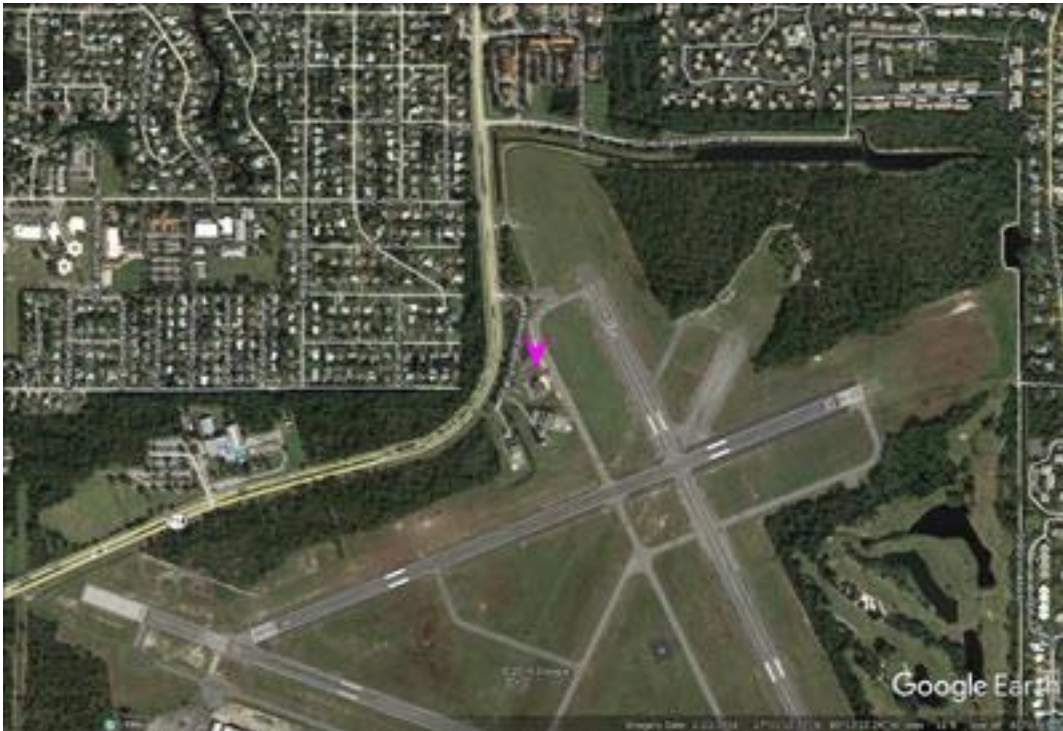
ITRF 2014 epoch 2019.837

After 1/6/2020

Geodetic Position*	
Latitude	27° 11' 12.73185" N
E Longitude	279° 46' 37.73811" E
W Longitude	80° 13' 22.26189" W
Ellipsoid Height	-22.603 M
Cartesian Coordinates*	
X = 964122.201 M	
Y = -5594974.981 M	
Z = 2896639.179 M	

State Plane Coordinates*	
Zone: -	
N: - M	
E: - M	
UTM Coordinates*	
Zone: -	
N: - M	
E: - M	
UTM Coordinates*	
Zone: 17	
N: 3007371.621 M	
E: 576978.555 M	

FPRN Datasheet
For
Stuart, FL (STEW)



* Positions and Coordinates were calculated using OPUS Projects software published by National Geodetic Survey (NGS).
** FPRN18 Orthometric Heights were calculated using Infinity software published by Leica Geosystems.



NAD 83 (2011) epoch 2010.000

After 9/6/2019

Geodetic Position*	
Latitude	27° 11' 12.71128" N
W Longitude	80° 13' 22.24152" W
Ellipsoid Height	-21.007 M
Cartesian Coordinates*	
X = 964123.044 M	
Y = -5594976.570 M	
Z = 2896639.345 M	

State Plane Coordinates*											
Zone: FL E											
N: 316346.946 M											
E: 277005.393 M				UTM Coordinates*		Zone: 17		N: 3007370.991 M		E: 576979.119 M	
UTM Coordinates*											
Zone: 17											
N: 3007370.991 M											
E: 576979.119 M											

ITRF 2014 epoch 2019.078

After 9/6/2019

Geodetic Position*	
Latitude	27° 11' 12.73203" N
E Longitude	279° 46' 37.73846" E
W Longitude	80° 13' 22.26154" W
Ellipsoid Height	-22.585 M
Cartesian Coordinates*	
X = 964122.213 M	
Y = -5594974.992 M	
Z = 2896639.192 M	

State Plane Coordinates*																											
Zone: -																											
N: - M																											
E: - M				Zone: -		N: - M		E: - M				Zone: -		N: - M		E: - M				UTM Coordinates*		Zone: 17		N: 3007371.626 M		E: 576978.564 M	
Zone: -																											
N: - M																											
E: - M				Zone: -		N: - M		E: - M				UTM Coordinates*		Zone: 17		N: 3007371.626 M		E: 576978.564 M									
Zone: -																											
N: - M																											
E: - M				UTM Coordinates*		Zone: 17		N: 3007371.626 M		E: 576978.564 M																	
UTM Coordinates*																											
Zone: 17																											
N: 3007371.626 M																											
E: 576978.564 M																											

NAD 83 (2011) epoch 2010.000

After 8/16/2018

Geodetic Position*	
Latitude	27° 11' 12.71134" N
W. Longitude	80° 13' 22.24213" W
Ellipsoid Height	-21.001 M
Cartesian Coordinates*	
X = 964123.028 M	
Y = -5594976.577 M	
Z = 2896639.349 M	

State Plane Coordinates*											
Zone: FL E											
N: 316346.948 M											
E: 277005.376 M				UTM Coordinates*		Zone: 17		N: 3007370.993 M		E: 576979.102 M	
UTM Coordinates*											
Zone: 17											
N: 3007370.993 M											
E: 576979.102 M											



NAD 83 (2011) epoch 2010.000

After 8/25/2015

Geodetic Position*	
Latitude	27° 11' 12.71134" N
W. Longitude	80° 13' 22.24213" W
Ellipsoid Height	-21.001 M
Cartesian Coordinates*	
X = 964123.028 M	
Y = -5594976.577 M	
Z = 2896639.349 M	

State Plane Coordinates*	
Zone: FL E	
N: 316346.948 M	
E: 277005.376 M	
UTM Coordinates*	
Zone: 17	
N: 3007370.993 M	
E: 576979.102 M	

NAD 83 (2011) epoch 2010.000

After 8/2/2014

Geodetic Position*	
Latitude	27° 11' 12.71109" N
W. Longitude	80° 13' 22.24223" W
Ellipsoid Height	-20.986 M
Cartesian Coordinates*	
X = 964123.028 M	
Y = -5594976.594 M	
Z = 2896639.349 M	

State Plane Coordinates*	
Zone: FL E	
N: 316346.940 M	
E: 277005.373 M	
UTM Coordinates*	
Zone: 17	
N: 3007370.985 M	
E: 576979.099 M	

NAD 83 (CORS96)

Prior to 8/2/2014

Geodetic Position*	
Latitude	27° 11' 12.71141" N
W. Longitude	80° 13' 22.24274" W
Ellipsoid Height	-20.996 M
Cartesian Coordinates*	
X = 964123.012 M	
Y = -5594976.583 M	
Z = 2896639.353 M	

State Plane Coordinates*	
Zone: FL E	
N: 316346.950 M	
E: 277005.359 M	
UTM Coordinates*	
Zone: 17	
N: 3007370.995 M	
E: 576979.085 M	